

SECTION D

FIXTURES, RACES AND PRIZE MONEY

TABLE 1

Fixtures

A fixture is defined as **one** day's racing at **one** course.

TABLE 2

Field Sizes - Flat

The number of Runners (1-5, 6-10, 11-15, 16-20 and 21+) in the number of races shown monthly for Flat races. The number of Walkovers (if any) is shown separately.

TABLE 3

Field Sizes - Jump

The number of Runners (1-5, 6-10, 11-15, 16-20 and 21+) in the number of races shown monthly for Hurdle Races and National Hunt Flat Races, and for Steeple Chases. The number of Walkovers (if any) is shown separately.

TABLE 4

Field Sizes – Flat and Jump

The number of Runners (1-5, 6-10, 11-15, 16-20 and 21+) in the number of races shown as a total for each of the last 5 years for Flat races and Jump races. A separate table for Hurdle Races and National Hunt Flat Races and for Steeple Chases is also shown. The number of Walkovers (if any) is shown separately.

TABLE 5

Flat Racing

Number of Different Horses Which Ran – by Age

An analysis of the number of different horses which ran on the Flat under Rules in each calendar year as 2 years old, 3 years old, 4 years old and over and in total.

Average Number of Runs per Horse that Ran

The number of individual different horses that ran on the Flat divided into the total number of Flat runners for each year.

Number of Different Winners

The number of different horses which won a Flat race under Rules in the calendar year.

Number of Races Divided Overnight

The number of different Flat races that were divided under the Orders and Rules of Racing because the number of horses declared to run exceeded the safety factor/maximum figure or field size limit of the race concerned or, in exceptional circumstances, to provide a sufficient number of races on the day due to other races on the card being abandoned.

Number of Horses Balloted Out or Eliminated

The number of horses taken out of a Flat race under the Orders and Rules of Racing because the number left in at the declaration to run stage exceeded the safety factor/maximum figure or field size limit. These figures are for ALL Flat races, including abandoned races, so will not necessarily equate to the total number of eliminations in table D6, which is only for races that actually took place.

Jump Racing

Number of Different Horses Which Ran

The total number of different horses which ran under Jump Rules in each calendar year.

Average Number of Runs per Horse that Ran

The number of individual different horses that ran under Jump Rules divided into the total number of Jump runners for each calendar year.

Number of Different Winners

The number of different horses that won a Jump race under Rules in the calendar year.

Number of Races Divided Overnight

The number of different Jump races that were divided under the Orders and Rules of Racing because the number of horses declared to run exceeded the safety factor/maximum figure or field size limit of the race concerned or, in exceptional circumstances, to provide a sufficient number of races on the day due to other races on the card being abandoned.

Number of Horses Balloted Out or Eliminated

The number of horses taken out of a Jump race under the Orders and Rules of Racing because the number left in at the declaration to run stage exceeded the safety factor/maximum figure or field size limit. These figures are for ALL Jump races, including abandoned races, so will not necessarily equate to the total number of eliminations in tables D7, D8 and D9, which are only for races that actually took place.

TABLE 6

Races, Entries, Runners, Eliminations and Prize Money by Type of Race – Flat

An analysis of the number of Entries, Runners and Eliminations by types of Handicaps and types of Weight-for-Age races, together with Prize Money value and percentage of total Flat Prize Money for each type.

TABLE 7

Races, Entries, Runners, Eliminations and Prize Money by Type of Race – Jump

An analysis of the number of Entries, Runners and Eliminations by types of Handicaps and types of Weight-for-Age races, together with Prize Money value and percentage of total Jump Prize Money for each type.

TABLE 8

Races, Entries, Runners, Eliminations and Prize Money by Distance of Race – Hurdle Races and National Hunt Flat Races

An analysis of the number of Entries, Runners and Eliminations by Distance of Race in Handicaps and Weight-for-Age races for Hurdle Races and National Hunt Flat Races. Averages per race, together with Prize Money value and percentage of total Prize Money for Hurdle Races and National Hunt Flat Races for each Distance category are shown.

TABLE 9

Races, Entries, Runners, Eliminations and Prize Money by Distance of Race – Steeple Chases

An analysis of the number of Entries, Runners and Eliminations by Distance of Race in Handicaps and Weight-for-Age races for Steeple Chases. Averages per race, together with Prize Money value and percentage of total Prize Money for Steeple Chases for each Distance category are shown.

TABLE 10

Prize Money by Source for Pattern Races – Flat Racing

An analysis by Course of the source of Prize Money for Flat Pattern Races.

TABLE 11

Prize Money by Source

An analysis of the total Prize Money for the last 5 years, broken down by source.

TABLE 12

Comparison of Flat and Jump Prize Money Pools

An analysis of Flat Prize Money, Jump Prize Money and Total Prize Money by source.

TABLE 13

Total Prize Money by Racecourse

A comparison of the number of Fixtures and Prize Money by source for each Racecourse. A separate table is shown for Flat Racing, Jump Racing and All Racing.

TABLE 14

Sponsored Number Cloth Income

A breakdown by Racecourse (Flat, Jump and Total) of the income derived from the sponsoring of number cloths.

TABLE 15

Prize Money Won Abroad by Horses Trained in Great Britain

Win and Place Prize Money won abroad (i.e. not England, Scotland or Wales) by horses trained in Great Britain at the time of running.

Prize Money Won in Great Britain by Horses Trained outside of Great Britain

Win and Place Prize Money won in Great Britain by horses showing a foreign Trainer in the Official Return sent in by the Clerk of the Scales from the Racecourse. The amount taken will be the Penalty Value shown.

TABLE 16

Appearance Money

The amount paid in Appearance Money payments for the last 5 years, under the terms of Order 232 and Instruction J11 of the Orders and Rules of Racing. A breakdown is shown of money paid in respect of Sunday Racing and that paid for races run on other days of the week.

Owners' Premiums

The amount paid in Owners' Premiums for British Bred Horses in accordance with Order 197 and Instruction J20 of the Orders and Rules of Racing. The Owners' Premium Scheme ran from January 1st, 2004 until December 31st, 2006.

Prize Money and Race Statistics

Fixtures

		2003		2004		2005		2006		2007
Flat										
Fixtures Programmed	(a,b)	726	(e)	802	(i)	811	(k)	842	(j,m,p)	868
Fixtures That Took Place	(c)	720	(f)	792	(j)	801	(l,m)	832		844
Fixtures Abandoned		6		18		11		10		23
Jump										
Fixtures Programmed	(d)	559		536		535		546	(q)	544
Fixtures That Took Place		497	(g)	504		496	(n,o)	506	(r)	482
Fixtures Abandoned		62		35		39		41		63
Mixed										
Fixtures Programmed		3		3		3		3		3
Fixtures That Took Place		3		3		3	(o)	4	(s)	4
Fixtures Abandoned		0		0		0		0		0
All Racing										
Fixtures Programmed		1,288		1,341		1,349		1,391		1,415
Fixtures That Took Place		1,220	(f,g)	1,299	(j)	1,300	(l,m,n,o)	1,342	(j,m,q,r,s)	1,330
Fixtures Abandoned		68		53		50		51		86
(Of Which Evening)										
Fixtures Programmed		197	(h)	223		221		229	(t)	287
Fixtures That Took Place		194		227		217		226		270
Fixtures Abandoned		3		2		4		3		16

Notes

- (a) 153 All Weather Track fixtures
- (b) 3 Additional fixtures
- (c) 1 AWT fixture transferred to turf and 3 turf fixtures transferred to AWT
- (d) 8 Replacement fixtures plus 12 Additional Replacement fixtures
- (e) 213 All Weather Track fixtures
- (f) 8 Additional Flat fixtures
- (g) 3 Additional Jump fixtures
- (h) 6 Additional Evening fixtures
- (i) 216 All Weather Track fixtures programmed
- (j) 1 Additional AWT Flat fixture
- (k) 297 All Weather Track fixtures
- (l) 2 Additional Flat fixtures
- (m) 2 AWT fixtures cancelled
- (n) 1 additional Jump fixture
- (o) 1 Jump fixture abandoned and replaced by an additional AWT (Mixed) fixture
- (p) 316 All Weather Track fixtures programmed, 8 of which were transferred to Turf
- (q) 2 Additional Jump fixtures
- (r) 1 Jump fixture cancelled
- (s) 1 Additional Mixed (AWT) fixture
- (t) 1 Additional Evening fixture and 2 Evening fixtures cancelled

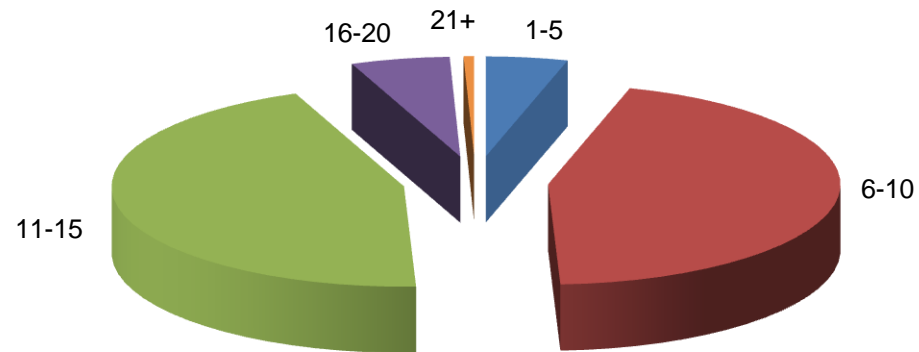
Numbers of Runners in Races

Flat Racing

2007

Runners	Number of Races												Total	% of All Races
	Jan	Feb	Mar	Apr	May	Jun	Jul	Aug	Sep	Oct	Nov	Dec		
1-5	6	11	17	21	51	33	31	23	23	7	6	27	256	4.5%
6-10	163	99	101	172	288	355	303	329	264	161	143	158	2,536	44.8%
11-15	122	98	106	176	262	266	282	353	299	330	143	87	2,524	44.6%
16-20	0	3	4	23	47	42	42	55	36	51	7	0	310	5.5%
21+	0	0	0	1	5	6	3	4	6	6	2	0	33	0.6%
TOTAL	291	211	228	393	653	702	661	764	628	555	301	272	5,659	100.0%

Notes
No Walkovers



Numbers of Runners in Races

Jump Racing

2007

Hurdle Races and National Hunt Flat Races

Runners	Number of Races												Total	% of All Races
	Jan	Feb	Mar	Apr	May	Jun	Jul	Aug	Sep	Oct	Nov	Dec		
1-5	8	9	9	14	8	2	1	1	1	2	16	1	72	3.8%
6-10	67	78	72	73	76	36	18	33	13	44	109	69	688	35.9%
11-15	83	65	92	81	88	48	35	41	62	76	93	113	877	45.8%
16-20	28	24	36	26	14	6	7	2	9	26	43	41	262	13.7%
21+	0	1	9	3	1	0	0	0	0	0	1	0	15	0.8%
TOTAL	186	177	218	197	187	92	61	77	85	148	262	224	1,914	100.0%

Steeple Chases

Runners	Number of Races												Total	% of All Races
	Jan	Feb	Mar	Apr	May	Jun	Jul	Aug	Sep	Oct	Nov	Dec		
1-5	30	28 ⁽¹⁾	37	38	16	6	4	3	1	14	39	29	245⁽¹⁾	18.8%
6-10	67	63	91	70	79	29	14	18	15	48	100	93	687	52.7%
11-15	25	21	27	36	38	15	16	15	21	24	35	39	312	23.9%
16-20	1	6	8	5	4	3	0	1	3	5	5	9	50	3.8%
21+	0	0	5	4	0	0	0	0	0	0	1	0	10	0.8%
TOTAL	123	118	168	153	137	53	34	37	40	91	180	170	1,304	100.0%

Notes

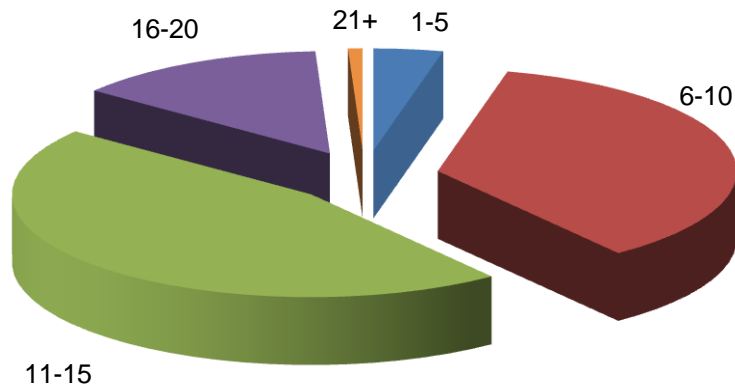
Number of walkovers in brackets

Numbers of Runners in Races

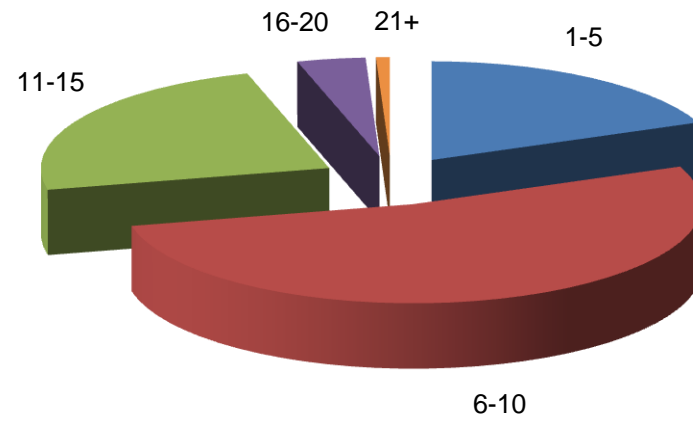
Jump Racing

2007

Hurdle Races and National Hunt Flat Races



Steeple Chases



Analysis of Racing by Size of Field

Flat Races

Runners	2003		2004		2005		2006		2007	
	Number of Races	% of All Races	Number of Races	% of All Races	Number of Races	% of All Races	Number of Races	% of All Races	Number of Races	% of All Races
1-5	383	8.0%	257	4.9%	193	3.6%	295	5.3%	256	4.5%
6-10	1,872	39.3%	2,096	40.0%	2,014	38.0%	2,367	42.6%	2,536	44.8%
11-15	1,744	36.6%	2,226	42.5%	2,451	46.2%	2,518	45.3%	2,524	44.6%
16-20	711	14.9%	615	11.7%	611	11.5%	348	6.3%	310	5.5%
21+	51	1.1%	47	0.9%	32	0.6%	26	0.5%	33	0.6%
TOTAL	4,761	100.0%	5,241	100.0%	5,301	100.0%	5,554	100.0%	5,659	100.0%

Jump Races

Runners	2003		2004		2005		2006		2007	
	Number of Races	% of All Races	Number of Races	% of All Races	Number of Races	% of All Races	Number of Races	% of All Races	Number of Races	% of All Races
1-5	650 ⁽⁴⁾	19.9%	359 ⁽¹⁾	10.8%	245	7.5%	264	7.8%	317 ⁽¹⁾	9.9%
6-10	1,527	46.7%	1,584	47.5%	1,560	47.5%	1,565	46.3%	1,375	42.7%
11-15	801	24.5%	1,031	30.9%	1,113	33.9%	1,217	36.0%	1,189	36.9%
16-20	256	7.8%	314	9.4%	336	10.2%	305	9.0%	312	9.7%
21+	33	1.0%	48	1.4%	33	1.0%	29	0.9%	25	0.8%
TOTAL	3,267	100.0%	3,336	100.0%	3,287	100.0%	3,380	100.0%	3,218	100.0%

Notes

The number of walkovers is shown in brackets.

Analysis of Racing by Size of Field

Hurdle Races and National Hunt Flat Races

Runners	2003		2004		2005		2006		2007	
	Number of Races	% of All Races	Number of Races	% of All Races	Number of Races	% of All Races	Number of Races	% of All Races	Number of Races	% of All Races
1-5	201	10.6%	73	3.8%	57	2.9%	70	3.5%	72	3.8%
6-10	827	43.8%	753	39.1%	724	37.3%	759	37.8%	688	35.9%
11-15	616	32.6%	780	40.5%	849	43.7%	894	44.6%	877	45.8%
16-20	222	11.7%	280	14.5%	287	14.8%	266	13.3%	262	13.7%
21+	24	1.3%	40	2.1%	25	1.3%	17	0.8%	15	0.8%
TOTAL	1,890	100.0%	1,926	100.0%	1,942	100.0%	2,006	100.0%	1,914	100.0%

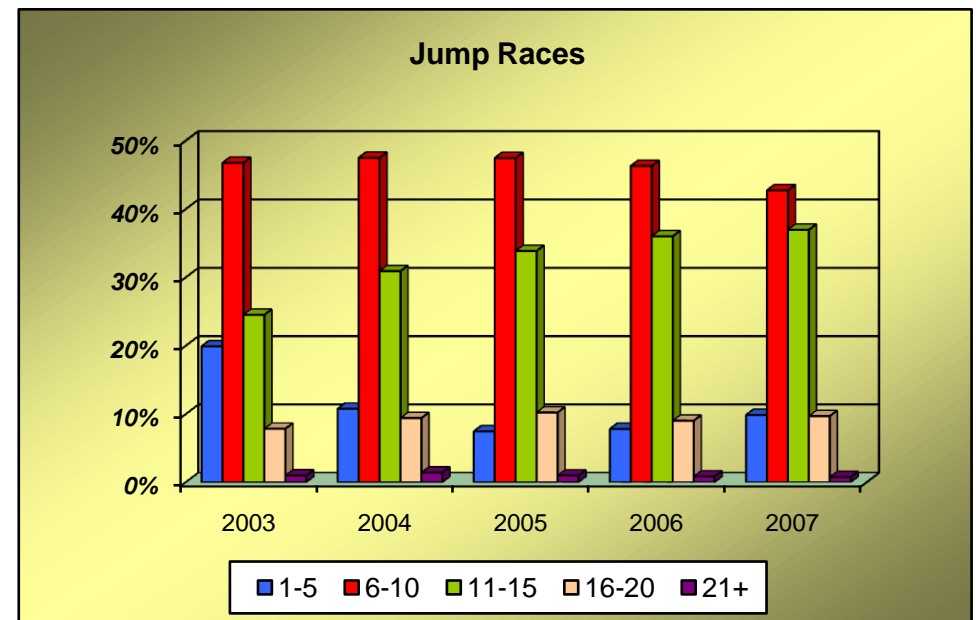
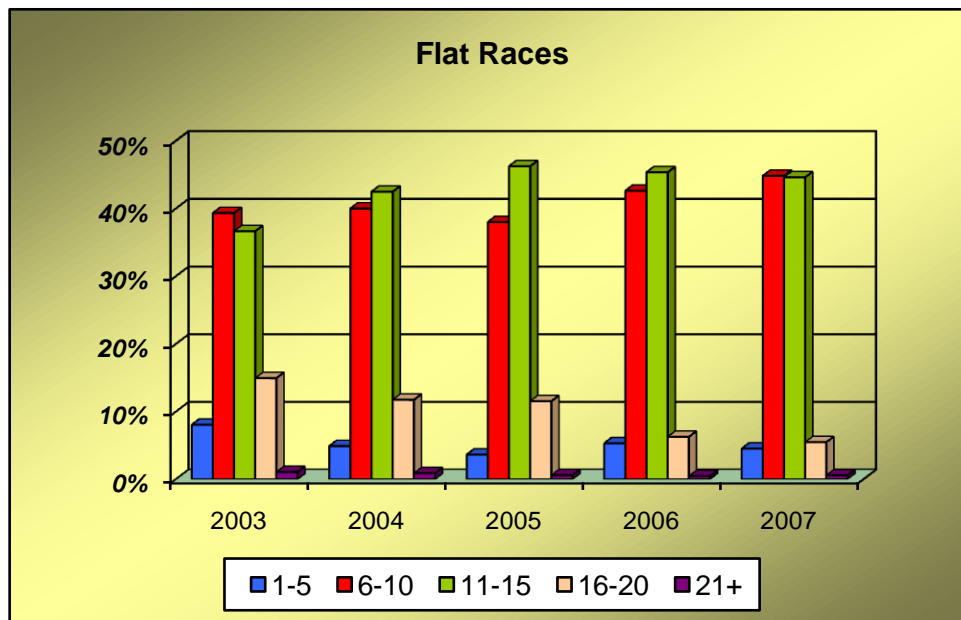
Steeple Chases

Runners	2003		2004		2005		2006		2007	
	Number of Races	% of All Races	Number of Races	% of All Races	Number of Races	% of All Races	Number of Races	% of All Races	Number of Races	% of All Races
1-5	449 ⁽⁴⁾	32.6%	286 ⁽¹⁾	20.3%	188	14.0%	194	14.1%	245 ⁽¹⁾	18.8%
6-10	700	50.8%	831	58.9%	836	62.2%	806	58.7%	687	52.7%
11-15	185	13.4%	251	17.8%	264	19.6%	323	23.5%	312	23.9%
16-20	34	2.5%	34	2.4%	49	3.6%	39	2.8%	50	3.8%
21+	9	0.7%	8	0.6%	8	0.6%	12	0.9%	10	0.8%
TOTAL	1,377	100.0%	1,410	100.0%	1,345	100.0%	1,374	100.0%	1,304	100.0%

Notes

The number of walkovers is shown in brackets.

Analysis of Racing by Size of Field



Analysis of Racing

Number of Different Horses Which Ran, Number of Different Horses Which Won, Number of Races Divided Overnight, and Number of Horses Balloted Out Or Eliminated

Flat Racing

	2003	2004	2005	2006	2007
No. of Different Horses Which Ran as 2-y-o	2,773	3,047	3,100	2,952	3,226
No. of Different Horses Which Ran as 3-y-o	3,024	3,206	3,393	3,388	3,318
No. of Different Horses Which Ran as 4-y-o +	3,930	4,295	4,496	4,614	4,739
No. of Different Horses Which Ran - TOTAL	9,727	10,548	10,989	10,954	11,283
Average Number of Runs per Horse that Ran	5.4	5.6	5.5	5.4	5.3
No. of Different Horses Which Won a Race	3,081	3,442	3,552	3,641	3,782
No. of Races Divided Overnight	192	207	184	177	177
No. of Horses Balloted Out or Eliminated	11,309	12,184	14,758	13,982	12,653

Jump Racing

	2003	2004	2005	2006	2007
No. of Different Horses Which Ran	8,553	9,130	9,315	9,783	9,896
Average Number of Runs per Horse that Ran	3.5	3.7	3.7	3.6	3.4
No. of Different Horses Which Won a Race	2,145	2,241	2,291	2,325	2,267
No. of Races Divided Overnight	49	79	58	76	73
No. of Horses Balloted Out or Eliminated	1,346	1,765	1,996	4,451	4,907

Racing and Prize Money Statistics

Entries, Runners, Eliminations and Prize Money by Type of Race

Flat Races

2007

Type of Race	No. of Races	Entries		Runners		Eliminations		Value £	% of Total Value
		Total	Average	Total	Average	Total	Average		
HANDICAPS									
Sellers	23	528	23.0	274	11.9	82	3.6	78,900	0.1%
Apprentices	154	3,927	25.5	1,706	11.1	245	1.6	711,699	1.1%
Amateurs	87	2,321	26.7	1,127	13.0	307	3.5	419,500	0.7%
Others	3,085	81,557	26.4	33,608	10.9	8,648	2.8	26,990,993	42.7%
Sub-Total	3,349	88,333	26.4	36,715	11.0	9,282	2.8	28,201,092	44.7%
WEIGHT FOR AGE									
Sellers	220	4,523	20.6	2,295	10.4	441	2.0	769,700	1.2%
Claimers	247	5,553	22.5	2,447	9.9	426	1.7	959,000	1.5%
Maidens	1,275	35,021	27.5	13,346	10.5	743	0.6	6,798,347	10.8%
Novices	58	1,263	21.8	366	6.3	0	0.0	391,323	0.6%
Apprentices	14	272	19.4	143	10.2	69	4.9	47,100	0.1%
Amateurs	3	64	21.3	35	11.7	19	6.3	9,700	0.0%
Pattern	139	5,578	40.1	1,414	10.2	9	0.1	18,268,301	28.9%
Others	354	8,969	25.3	3,320	9.4	1,497	4.2	7,709,370	12.2%
Sub-Total	2,310	61,243	26.5	23,366	10.1	3,204	1.4	34,952,841	55.3%
TOTAL	5,659	149,576	26.4	60,081	10.6	12,486	2.2	63,153,933	100.0%

Notes

The above prize money figures have been rounded up or down as necessary. Consequently, the total prize money may not equate to the sum of the individual parts.

Racing and Prize Money Statistics
Entries, Runners, Eliminations and Prize Money by Type of Race

Jump Races
2007

Type of Race	No. of Races	Entries		Runners		Eliminations		Value £	% of Total Value
		Total	Average	Total	Average	Total	Average		
HURDLE RACES									
HANDICAPS									
Novices'	121	4,394	36.3	1,482	12.2	467	3.9	958,290	2.7%
Sellers	45	1,210	26.9	555	12.3	109	2.4	154,300	0.4%
Conditional Jockeys	94	3,172	33.7	1,148	12.2	311	3.3	437,200	1.2%
Amateurs	30	984	32.8	391	13.0	71	2.4	139,100	0.4%
Others	490	15,714	32.1	5,703	11.6	846	1.7	5,636,452	16.0%
WEIGHT FOR AGE									
Novices'	544	18,055	33.2	5,916	10.9	718	1.3	4,550,557	12.9%
Maidens	191	7,328	38.4	2,405	12.6	632	3.3	873,742	2.5%
Sellers	79	2,122	26.9	904	11.4	105	1.3	257,600	0.7%
Conditional Jockeys	15	465	31.0	169	11.3	12	0.8	58,700	0.2%
Amateurs	3	98	32.7	27	9.0	0	0.0	15,000	0.0%
Others	52	1,141	21.9	458	8.8	46	0.9	2,226,125	6.3%
National Hunt Flat Races	250	8,570	34.3	3,086	12.3	673	2.7	921,600	2.6%
Sub-Total	1,914	63,253	33.0	22,244	11.6	3,990	2.1	16,228,666	46.0%
STEEPLE CHASES									
HANDICAPS									
Novices'	144	3,731	25.9	1,264	8.8	139	1.0	1,276,460	3.6%
Sellers	9	178	19.8	86	9.6	17	1.9	30,844	0.1%
Conditional Jockeys	22	563	25.6	243	11.0	45	2.0	126,000	0.4%
Amateurs	13	386	29.7	152	11.7	14	1.1	162,700	0.5%
Hunters	1	19	19.0	11	11.0	0	0.0	12,000	0.0%
Others	624	15,854	25.4	5,965	9.6	374	0.6	10,058,491	28.5%
WEIGHT FOR AGE									
Novices'	339	6,926	20.4	2,271	6.7	52	0.2	3,964,228	11.2%
Maidens	12	321	26.8	103	8.6	0	0.0	72,442	0.2%
Amateurs	3	83	27.7	39	13.0	5	1.7	72,000	0.2%
Hunters	102	2,381	23.3	995	9.8	93	0.9	463,703	1.3%
Others	35	738	21.1	263	7.5	5	0.1	2,805,601	8.0%
Sub-Total	1,304	31,180	23.9	11,392	8.7	744	0.6	19,044,469	54.0%
GRAND TOTAL	3,218	94,433	29.3	33,636	10.5	4,734	1.5	35,273,135	100.0%

Notes

The above prize money figures have been rounded up or down as necessary. Consequently, the total prize money may not equate to the sum of the individual parts.

Racing and Prize Money Statistics

Entries, Runners, Eliminations and Prize Money by Distance of Race

Hurdle Races and National Hunt Flat Races

2007

Distance of Race	No. of Races	Entries		Runners		Eliminations		Value £	% of Total Value
		Total	Average	Total	Average	Total	Average		
HANDICAPS									
2 Miles	253	7,665	30.3	3,018	11.9	485	1.9	2,883,241	17.8%
2 ¼ Miles	76	2,306	30.3	846	11.1	171	2.3	527,950	3.3%
2 ½ Miles	199	7,140	35.9	2,417	12.1	543	2.7	1,798,914	11.1%
2 ¾ Miles	108	3,723	34.5	1,277	11.8	273	2.5	806,011	5.0%
3 Miles and over	144	4,640	32.2	1,721	12.0	332	2.3	1,309,226	8.1%
Sub-Total	780	25,474	32.7	9,279	11.9	1,804	2.3	7,325,342	45.1%
WEIGHT FOR AGE									
2 Miles	657	21,765	33.1	7,799	11.9	1,269	1.9	4,980,733	30.7%
2 ¼ Miles	116	3,693	31.8	1,282	11.1	311	2.7	525,600	3.2%
2 ½ Miles	216	7,792	36.1	2,405	11.1	468	2.2	1,758,339	10.8%
2 ¾ Miles	77	2,449	31.8	829	10.8	77	1.0	449,800	2.8%
3 Miles and over	68	2,080	30.6	650	9.6	61	0.9	1,188,852	7.3%
Sub-Total	1,134	37,779	33.3	12,965	11.4	2,186	1.9	8,903,324	54.9%
TOTAL	1,914	63,253	33.0	22,244	11.6	3,990	2.1	16,228,666	100.0%

Notes

The above prize money figures have been rounded up or down as necessary. Consequently, the total prize money may not equate to the sum of the individual parts.

Racing and Prize Money Statistics

Entries, Runners, Eliminations and Prize Money by Distance of Race

Steeple Chases

2007

Distance of Race	No. of Races	Entries		Runners		Eliminations		Value £	% of Total Value
		Total	Average	Total	Average	Total	Average		
HANDICAPS									
2 Miles	160	3,167	19.8	1,327	8.3	26	0.2	1,733,465	9.1%
2 ¼ Miles	59	1,376	23.3	548	9.3	75	1.3	571,446	3.0%
2 ½ Miles	202	5,229	25.9	1,864	9.2	189	0.9	2,524,529	13.3%
2 ¾ Miles	78	2,117	27.1	780	10.0	74	0.9	1,045,018	5.5%
3 Miles and over	314	8,842	28.2	3,202	10.2	225	0.7	5,792,038	30.4%
Sub-Total	813	20,731	25.5	7,721	9.5	589	0.7	11,666,495	61.3%
WEIGHT FOR AGE									
2 Miles	96	1,727	18.0	628	6.5	5	0.1	1,881,838	9.9%
2 ¼ Miles	33	699	21.2	231	7.0	0	0.0	426,997	2.2%
2 ½ Miles	137	3,105	22.7	1,041	7.6	24	0.2	1,648,004	8.7%
2 ¾ Miles	55	1,339	24.3	444	8.1	68	1.2	465,973	2.4%
3 Miles and over	170	3,579	21.1	1,327	7.8	58	0.3	2,955,163	15.5%
Sub-Total	491	10,449	21.3	3,671	7.5	155	0.3	7,377,973	38.7%
TOTAL	1,304	31,180	23.9	11,392	8.7	744	0.6	19,044,469	100.0%

Notes

The above prize money figures have been rounded up or down as necessary. Consequently, the total prize money may not equate to the sum of the individual parts.

Prize Money by Source for Pattern Races

Flat Racing

2007

Racecourse	No. of Races	Prize Money Contributions		
		Racecourse Executive plus Sponsors £	Owners' Contribution £	Total Prize Fund £
ASCOT	30	3,414,840	1,314,905	4,729,745
AYR	1	55,000	5,000	60,000
CHESTER	4	243,188	21,560	264,748
DONCASTER	8	924,875	360,375	1,285,250
EPSOM DOWNS	5	1,318,323	697,265	2,015,588
GOODWOOD	15	1,140,600	246,800	1,387,400
HAYDOCK PARK	2	265,600	114,700	380,300
KEMPTON PARK	2	78,780	5,220	84,000
LINGFIELD PARK	3	192,550	17,450	210,000
NEWBURY	11	595,521	122,845	718,366
NEWCASTLE	1	47,600	2,400	50,000
NEWMARKET	30	2,674,180	1,071,035	3,745,215
SALISBURY	1	61,850	3,150	65,000
SANDOWN PARK	9	768,950	179,750	948,700
WINDSOR	1	45,250	4,750	50,000
YORK	16	1,649,235	624,755	2,273,990
TOTAL	139	13,476,342	4,791,960	18,268,301

NOTES

The above prize money figures have been rounded up or down as necessary. Consequently, the total prize money may not equate to the sum of the individual parts.

Racecourse Executive plus Sponsors' contribution for Ascot includes £25,000 provided by the Horserace Betting Levy Board to fund the staging of the Hackwood Stakes, which was re-scheduled following the abandonment of Newbury on July 21st.

Racecourse Executive plus Sponsors' contribution for Newmarket includes £40,000 provided by the Horserace Betting Levy Board to fund the staging of the Lancashire Oaks, which was re-scheduled following the abandonment of Haydock on July 7th.

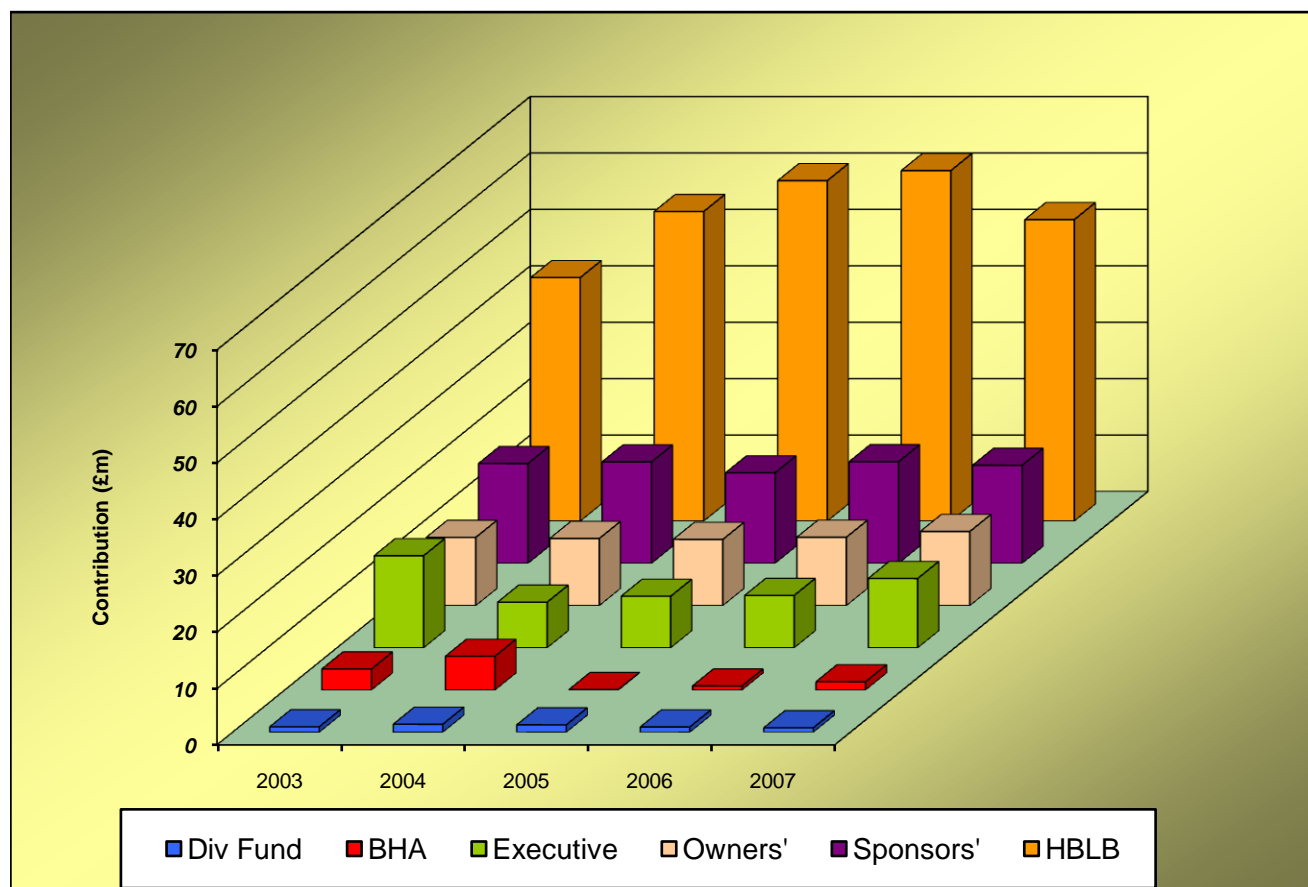
Breakdown of Prize Money by Source

	£ Million						TOTAL
	Executive	Sponsors'	HBLB	Owners'	BHA	Div Fund	
2003	16.30	17.69	43.15	12.08	3.72	0.95	93.90
2004	8.07	17.97	54.86	11.89	5.97	1.41	100.17
2005	9.13	16.04	60.32	11.72	0.07	1.30	98.57
2006	9.26	18.00	62.10	12.10	0.71	0.92	103.10
2007	12.27	17.37	53.42	13.13	1.46	0.78	98.43

Notes

The above figures have been rounded to two decimal places.

Consequently, the TOTAL column will not always equate to the sum of the individual parts.



Comparison of Flat/Jump Prize Money Pools

Prize Money Statistics

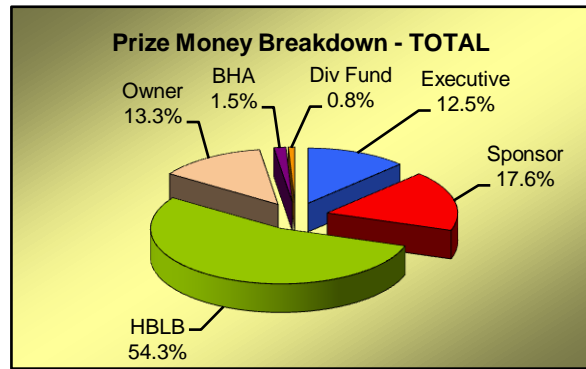
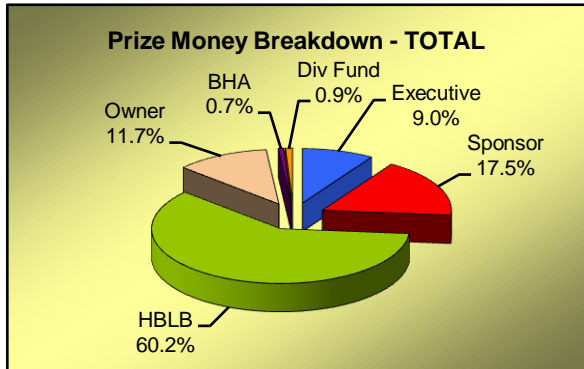
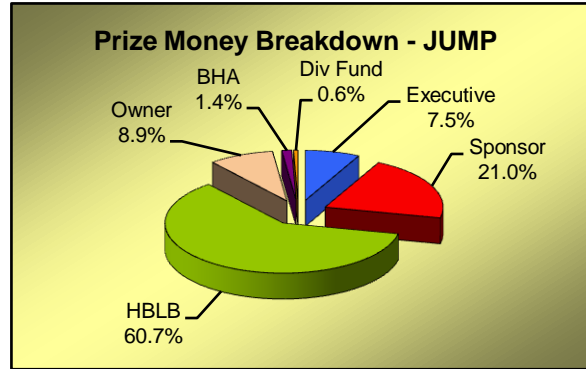
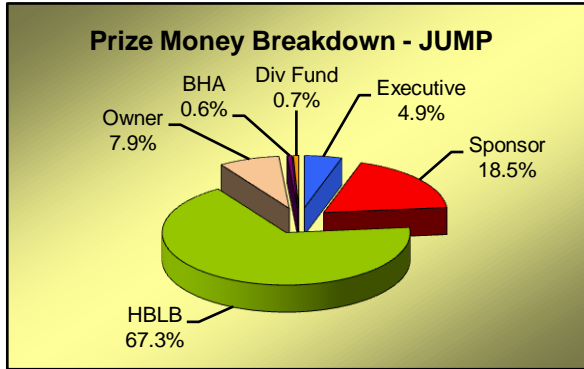
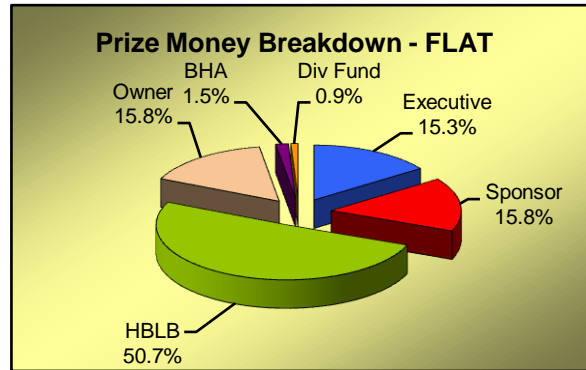
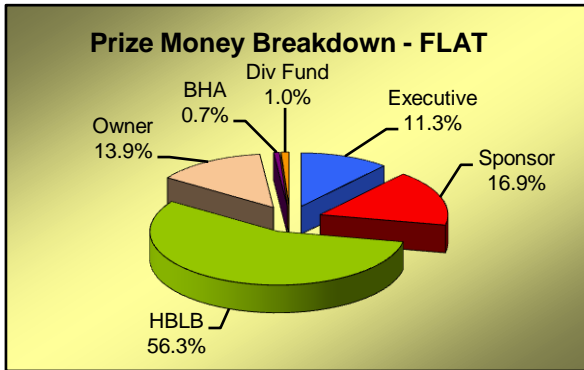
2006

	Flat	Jump	TOTAL
Executive	7,461,115	1,803,144	9,264,258
Sponsor	11,169,101	6,831,810	18,000,911
HBLB	37,297,231	24,803,679	62,100,910
Owner	9,184,664	2,912,929	12,097,593
BHA	474,000	238,000	712,000
Div Fund	657,700	262,550	920,250
TOTAL	66,243,811	36,852,112	103,095,922

Prize Money Statistics

2007

	Flat	Jump	TOTAL
Executive	9,638,803	2,633,956	12,272,759
Sponsor	9,964,913	7,405,328	17,370,241
HBLB	32,022,271	21,400,039	53,422,309
Owner	9,981,827	3,144,112	13,125,939
BHA	976,570	480,500	1,457,070
Div Fund	569,550	209,200	778,750
TOTAL	63,153,933	35,273,135	98,427,068



Notes

The above figures have been rounded up or down as necessary. Consequently, the totals will not always equate to the sum of the individual parts.

Total Prize Money by Racecourse Flat Racing - 2007

	Fixtures Ran (Aban)	Exec+Spons	HBLB	Owners	BHA	Div Fund	TOTAL
ASCOT	17	3,836,415	1,807,945	1,790,271	64,250	0	7,498,881
AYR	16	281,562	695,760	143,928	8,000	0	1,129,250
BATH	19	93,485	494,990	40,730	11,500	5,000	645,705
BEVERLEY	20 (1)	199,359	635,492	67,528	24,500	3,000	929,879
BRIGHTON	18	17,293	475,730	31,909	0	0	524,932
CARLISLE	7 (1)	65,636	155,173	18,941	0	2,350	242,100
CATTERICK BRIDGE	19	105,267	490,890	39,673	6,000	10,500	652,330
CHEPSTOW	11 (2)	15,211	288,150	22,939	2,000	0	328,300
CHESTER	13	517,106	732,270	75,071	42,000	0	1,366,447
DONCASTER	8	1,340,935	512,490	805,175	29,000	20,000	2,707,600
EPSOM DOWNS	3	1,534,800	251,950	753,138	12,000	0	2,551,888
FOLKESTONE	17	45,382	487,433	43,077	4,000	6,850	586,743
GOODWOOD	22	1,379,600	1,539,600	478,024	45,000	10,250	3,452,474
HAMILTON PARK	18	156,345	553,835	64,381	23,000	0	797,561
HAYDOCK PARK	18 (4)	416,983	1,008,127	303,690	21,000	13,700	1,763,500
KEMPTON PARK	62	397,175	1,757,230	169,808	98,500	47,800	2,470,513
LEICESTER	18 (2)	144,540	576,850	68,552	36,000	11,000	836,942
LINGFIELD PARK	99	638,064	3,015,432	254,201	112,000	94,600	4,114,297
MUSSELBURGH	20	206,268	609,660	66,844	9,000	0	891,772
NEWBURY	17 (2)	616,083	1,042,300	266,127	39,320	69,500	2,033,330
NEWCASTLE	17	432,473	593,320	104,240	11,500	2,000	1,143,533
NEWMARKET	37	2,956,023	2,802,450	1,850,428	130,000	47,000	7,785,901
NOTTINGHAM	17 (2)	54,348	502,423	78,294	42,000	32,500	709,565
PONTEFRACT	16	249,504	660,810	68,545	19,500	9,000	1,007,359
REDCAR	15	62,755	472,380	266,665	4,000	12,700	818,500
RIPON	13 (1)	200,155	479,830	26,386	17,000	13,000	736,371
SALISBURY	13 (2)	191,363	501,810	72,140	34,500	25,000	824,813
SANDOWN PARK	20	724,113	1,193,941	275,545	37,000	6,000	2,236,599
SOUTHWELL	48 (1)	49,625	1,334,290	69,785	0	30,450	1,484,150
THIRSK	15	200,160	492,590	0	7,500	20,000	720,250
WARWICK	14	100,985	377,823	52,992	8,000	5,500	545,300
WINDSOR	25 (1)	215,257	854,720	106,333	24,000	10,200	1,210,510
WOLVERHAMPTON	121 (1)	151,167	2,930,665	206,668	21,000	56,750	3,366,250
YARMOUTH	21 (1)	77,486	546,750	50,742	7,500	4,900	687,378
YORK	14 (2)	1,930,796	1,147,160	1,249,057	26,000	0	4,353,013
TOTAL	848 (23)	19,603,716	32,022,271	9,981,827	976,570	569,550	63,153,933

Notes

The above figures have been rounded up or down as necessary. Consequently, the totals will not always equate to the sum of the individual parts. Mixed meetings are included with the Flat figures.

No fixtures were staged at Great Leighs in 2007, as the opening of the racecourse had been delayed.

Total Prize Money by Racecourse Jump Racing - 2007

	Fixtures Ran (Aban)	Exec+Spons	HBLB	Owners	BHA	Div Fund	TOTAL
AINTREE	7	1,701,236	769,350	313,030	32,000	0	2,815,616
ASCOT	8 (1)	840,790	652,910	67,937	25,000	0	1,586,637
AYR	9 (3)	165,113	453,920	111,872	17,500	3,000	751,405
BANGOR-ON-DEE	14 (1)	101,824	513,080	39,196	3,500	12,500	670,100
CARLISLE	9 (3)	45,043	348,160	27,920	10,000	0	431,123
CARTMEL	6	19,563	158,000	15,487	0	6,500	199,550
CATTERICK BRIDGE	8 (1)	-28,227	272,240	19,687	2,500	4,500	270,700
CHELtenham	16	3,121,627	1,600,033	847,056	44,000	0	5,612,716
CHEPSTOW	12 (4)	109,020	507,060	55,805	1,000	7,200	680,085
DONCASTER	1 (2)	8,315	43,130	3,055	0	0	54,500
EXETER	14 (2)	93,608	584,220	52,940	26,000	5,000	761,768
FAKENHAM	9	52,635	312,985	2,080	5,000	3,500	376,200
FOLKESTONE	9 (1)	17,979	274,870	24,440	2,500	0	319,789
FONTWELL PARK	20	74,368	603,560	43,705	2,500	3,500	727,633
HAYDOCK PARK	8	663,590	623,023	102,955	11,000	2,000	1,402,568
HEREFORD	14 (2)	18,998	437,450	40,702	2,500	10,000	509,650
HEXHAM	14 (1)	69,643	402,967	34,690	10,000	3,000	520,300
HUNTINGDON	16 (3)	-8,310	634,590	64,497	20,000	10,500	721,277
KELSO	14	135,419	551,213	46,465	19,500	4,500	757,097
KEMPTON PARK	10	481,365	793,200	89,390	42,000	0	1,405,955
LEICESTER	9 (2)	30,837	330,030	33,880	2,500	0	397,247
LINGFIELD PARK	7 (3)	46,749	238,974	22,445	0	500	308,668
LUDLOW	14 (2)	94,655	528,210	28,780	7,500	3,000	662,145
MARKET RASEN	19 (1)	136,982	714,260	88,472	8,000	4,000	951,714
MUSSELBURGH	7 (1)	29,875	259,430	25,375	10,000	3,000	327,680
NEWBURY	11	399,825	858,190	189,064	15,000	5,500	1,467,579
NEWCASTLE	9 (2)	98,129	415,240	31,441	2,500	0	547,310
NEWTON ABBOT	15 (3)	30,399	530,490	5,776	10,000	17,500	594,165
PERTH	13 (2)	81,671	551,150	38,679	12,000	4,000	687,500
PLUMPTON	16	16,450	548,695	33,945	7,500	5,000	611,590
SANDOWN PARK	7 (2)	685,974	681,849	114,025	17,500	0	1,499,348
SEDFIELD	17 (2)	9,501	476,260	34,889	0	17,500	538,150
SOUTHWELL	4 (2)	79,792	141,130	18,078	17,500	0	256,500
STRATFORD-ON-AVON	14 (4)	135,453	581,265	61,782	8,500	23,000	810,000
TAUNTON	11 (2)	45,552	375,560	28,246	10,000	22,000	481,358
TOWCESTER	18	15,056	540,045	56,735	0	7,000	618,836
UTTOXETER	24	79,652	945,440	94,258	12,500	9,000	1,140,850
WARWICK	9 (1)	-11,415	461,820	41,155	19,500	0	511,060
WETHERBY	16 (2)	140,585	704,850	91,011	25,000	6,500	967,946
WINCANTON	16	213,101	762,790	75,929	18,500	4,500	1,074,820
WORCESTER	8 (8)	-3,138	218,400	27,238	0	1,500	244,000
TOTAL	482 (63)	10,039,284	21,400,039	3,144,112	480,500	209,200	35,273,135

Notes

The above figures have been rounded up or down as necessary. Consequently, the totals will not always equate to the sum of the individual parts.
No fixtures were staged at Great Leighs in 2007, as the opening of the racecourse had been delayed.

Total Prize Money by Racecourse All Racing - 2007

	Fixtures Ran (Aban)	Exec+Spons	HBLB	Owners	BHA	Div Fund	TOTAL
AINTREE	7	1,701,236	769,350	313,030	32,000	0	2,815,616
ASCOT	25 (1)	4,677,204	2,460,855	1,858,208	89,250	0	9,085,517
AYR	25 (3)	446,675	1,149,680	255,800	25,500	3,000	1,880,655
BANGOR-ON-DEE	14 (1)	101,824	513,080	39,196	3,500	12,500	670,100
BATH	19	93,485	494,990	40,730	11,500	5,000	645,705
BEVERLEY	20 (1)	199,359	635,492	67,528	24,500	3,000	929,879
BRIGHTON	18	17,293	475,730	31,909	0	0	524,932
CARLISLE	16 (4)	110,679	503,333	46,861	10,000	2,350	673,223
CARTMEL	6	19,563	158,000	15,487	0	6,500	199,550
CATTERICK BRIDGE	27 (1)	77,040	763,130	59,360	8,500	15,000	923,030
CHELTENHAM	16	3,121,627	1,600,033	847,056	44,000	0	5,612,716
CHEPSTOW	23 (6)	124,231	795,210	78,744	3,000	7,200	1,008,385
CHESTER	13	517,106	732,270	75,071	42,000	0	1,366,447
DONCASTER	9 (2)	1,349,250	555,620	808,230	29,000	20,000	2,762,100
EPSOM DOWNS	3	1,534,800	251,950	753,138	12,000	0	2,551,888
EXETER	14 (2)	93,608	584,220	52,940	26,000	5,000	761,768
FAKENHAM	9	52,635	312,985	2,080	5,000	3,500	376,200
FOLKESTONE	26 (1)	63,362	762,303	67,517	6,500	6,850	906,532
FONTWELL PARK	20	74,368	603,560	43,705	2,500	3,500	727,633
GOODWOOD	22	1,379,600	1,539,600	478,024	45,000	10,250	3,452,474
HAMILTON PARK	18	156,345	553,835	64,381	23,000	0	797,561
HAYDOCK PARK	26 (4)	1,080,573	1,631,150	406,645	32,000	15,700	3,166,068
HEREFORD	14 (2)	18,998	437,450	40,702	2,500	10,000	509,650
HEXHAM	14 (1)	69,643	402,967	34,690	10,000	3,000	520,300
HUNTINGDON	16 (3)	-8,310	634,590	64,497	20,000	10,500	721,277
KELSO	14	135,419	551,213	46,465	19,500	4,500	757,097
KEMPTON PARK	72	878,540	2,550,430	259,198	140,500	47,800	3,876,468
LEICESTER	27 (4)	175,377	906,880	102,432	38,500	11,000	1,234,189
LINGFIELD PARK	106 (3)	684,813	3,254,406	276,646	112,000	95,100	4,422,965
LUDLOW	14 (2)	94,655	528,210	28,780	7,500	3,000	662,145
MARKET RASEN	19 (1)	136,982	714,260	88,472	8,000	4,000	951,714
MUSSELBURGH	27 (1)	236,143	869,090	92,219	19,000	3,000	1,219,452
NEWBURY	28 (2)	1,015,908	1,900,490	455,191	54,320	75,000	3,500,909
NEWCASTLE	26 (2)	530,602	1,008,560	135,681	14,000	2,000	1,690,843
NEWMARKET	37	2,956,023	2,802,450	1,850,428	130,000	47,000	7,785,901
NEWTON ABBOT	15 (3)	30,399	530,490	5,776	10,000	17,500	594,165
NOTTINGHAM	17 (2)	54,348	502,423	78,294	42,000	32,500	709,565
PERTH	13 (2)	81,671	551,150	38,679	12,000	4,000	687,500
PLUMPTON	16	16,450	548,695	33,945	7,500	5,000	611,590
PONTEFRACT	16	249,504	660,810	68,545	19,500	9,000	1,007,359
REDCAR	15	62,755	472,380	266,665	4,000	12,700	818,500
RIPON	13 (1)	200,155	479,830	26,386	17,000	13,000	736,371
SALISBURY	13 (2)	191,363	501,810	72,140	34,500	25,000	824,813
SANDOWN PARK	27 (2)	1,410,087	1,875,790	389,570	54,500	6,000	3,735,947
SEDFIELD	17 (2)	9,501	476,260	34,889	0	17,500	538,150
SOUTHWELL	52 (3)	129,417	1,475,420	87,863	17,500	30,450	1,740,650
STRATFORD-ON-AVON	14 (4)	135,453	581,265	61,782	8,500	23,000	810,000
TAUNTON	11 (2)	45,552	375,560	28,246	10,000	22,000	481,358
THIRSK	15	200,160	492,590	0	7,500	20,000	720,250
TOWCESTER	18	15,056	540,045	56,735	0	7,000	618,836
UTTOXETER	24	79,652	945,440	94,258	12,500	9,000	1,140,850
WARWICK	23 (1)	89,569	839,643	94,147	27,500	5,500	1,056,360
WETHERBY	16 (2)	140,585	704,850	91,011	25,000	6,500	967,946
WINCANTON	16	213,101	762,790	75,929	18,500	4,500	1,074,820
WINDSOR	25 (1)	215,257	854,720	106,333	24,000	10,200	1,210,510
WOLVERHAMPTON	121 (1)	151,167	2,930,665	206,668	21,000	56,750	3,366,250
WORCESTER	8 (8)	-3,138	218,400	27,238	0	1,500	244,000
YARMOUTH	21 (1)	77,486	546,750	50,742	7,500	4,900	687,378
YORK	14 (2)	1,930,796	1,147,160	1,249,057	26,000	0	4,353,013
TOTAL	1,330 (86)	29,643,000	53,422,309	13,125,939	1,457,070	778,750	98,427,068

Notes

The above figures have been rounded up or down as necessary. Consequently, the totals will not always equate to the sum of the individual parts.

Mixed meetings are included with the Flat figures.

No fixtures were staged at Great Leighs in 2007, as the opening of the racecourse had been delayed.

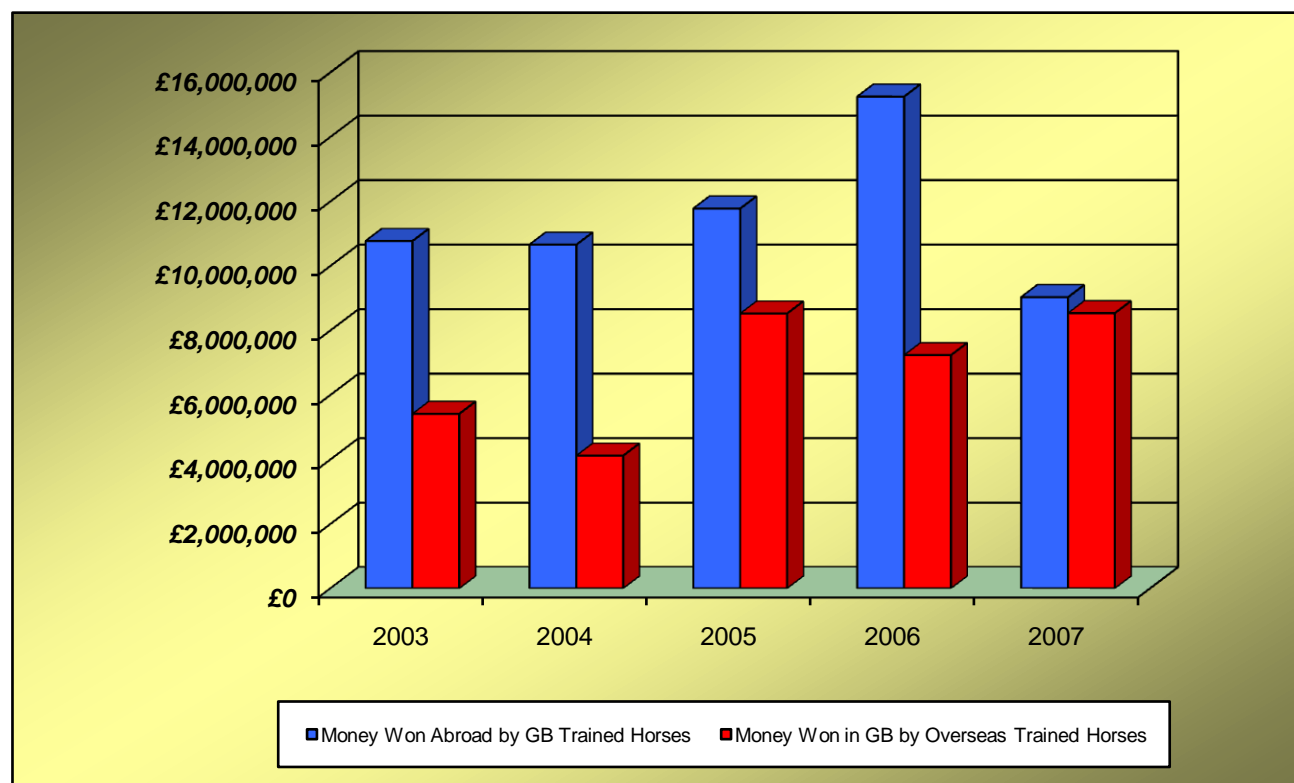
Sponsored Number Cloth Income

2007

	FLAT	JUMP	TOTAL
AINTREE		17,500	17,500
ASCOT	34,250	10,000	44,250
AYR	2,000	2,000	4,000
BANGOR-ON-DEE		500	500
BATH	250		250
BEVERLEY	1,000		1,000
BRIGHTON	0		0
CARLISLE	0	500	500
CARTMEL		0	0
CATTERICK BRIDGE	500	0	500
CHELTENHAM		21,750	21,750
CHEPSTOW	0	3,500	3,500
CHESTER	7,250		7,250
DONCASTER	7,500	0	7,500
EPSOM DOWNS	8,250		8,250
EXETER		250	250
FAKENHAM		0	0
FOLKESTONE	1,500	0	1,500
FONTWELL PARK		500	500
GOODWOOD	12,750		12,750
HAMILTON PARK	1,250		1,250
HAYDOCK PARK	5,000	6,000	11,000
HEREFORD		0	0
HEXHAM		0	0
HUNTINGDON		1,500	1,500
KELSO		250	250
KEMPTON PARK	6,500	7,500	14,000
LEICESTER	0	0	0
LINGFIELD PARK	7,250	0	7,250
LUDLOW		0	0
MARKET RASEN		3,000	3,000
MUSSELBURGH	2,250	1,500	3,750
NEWBURY	11,750	7,750	19,500
NEWCASTLE	5,500	2,000	7,500
NEWMARKET	31,000		31,000
NEWTON ABBOT		0	0
NOTTINGHAM	1,500		1,500
PERTH		1,250	1,250
PLUMPTON		0	0
PONTEFRACT	250		250
REDCAR	500		500
RIPON	1,750		1,750
SALISBURY	2,500		2,500
SANDOWN PARK	6,000	9,000	15,000
SEDFIELD		0	0
SOUTHWELL	0	1,500	1,500
STRATFORD-ON-AVON		500	500
TAUNTON		0	0
THIRSK	500		500
TOWCESTER		250	250
UTTOXETER		3,500	3,500
WARWICK	250	2,500	2,750
WETHERBY		5,000	5,000
WINCANTON		3,500	3,500
WINDSOR	250		250
WOLVERHAMPTON	1,000		1,000
WORCESTER		0	0
YARMOUTH	0		0
YORK	16,750		16,750
TOTAL	177,000	113,000	290,000

Prize Money Entering and Leaving Great Britain

	2003	2004	2005	2006	2007
Prize Money WON ABROAD					
by horses trained in Great Britain	10,769,887	10,656,247	11,777,096	15,247,516	9,028,843
Prize Money WON IN GREAT BRITAIN					
by horses trained outside of Great Britain	5,413,201	4,115,195	8,521,477	7,231,583	8,533,123



Appearance Money and Owners' Premium Payments

	2003	2004	2005	2006	2007
	£	£	£	£	£
APPEARANCE MONEY					
Sundays	1,316,950	2,206,600	1,795,330	1,925,050	1,229,840
Other Days	1,067,550	1,207,950	816,510	1,150,950	318,800
TOTAL	2,384,500	3,414,550	2,611,840	3,076,000	1,548,640
OWNERS' PREMIUMS					
	N/A	1,050,205	446,860	707,854	N/A

