

## SECTION D

### FIXTURES, RACES AND PRIZE MONEY

#### TABLE 1

##### Fixtures

A fixture is defined as **one** day's racing at **one** course.

#### TABLE 2

##### Field Sizes - Flat

The number of Runners (1-5, 6-10, 11-15, 16-20 and 21+) in the number of races shown monthly for Flat races. The number of Walkovers (if any) is shown separately.

#### TABLE 3

##### Field Sizes - Jump

The number of Runners (1-5, 6-10, 11-15, 16-20 and 21+) in the number of races shown monthly for Hurdle Races and National Hunt Flat Races, and for Steeple Chases. The number of Walkovers (if any) is shown separately.

#### TABLE 4

##### Field Sizes – Flat and Jump

The number of Runners (1-5, 6-10, 11-15, 16-20 and 21+) in the number of races shown as a total for each of the last 5 years for Flat races and Jump races. A separate table for Hurdle Races and National Hunt Flat Races and for Steeple Chases is also shown. The number of Walkovers (if any) is shown separately.

#### TABLE 5

##### Flat Racing

##### Number of Different Horses Which Ran – by Age

An analysis of the number of different horses which ran on the Flat under Rules in each calendar year as 2 years old, 3 years old, 4 years old and over and in total.

##### Average Number of Runs per Horse that Ran

The number of individual different horses that ran on the Flat divided into the total number of Flat runners for each year.

##### Number of Different Winners

The number of different horses which won a Flat race under Rules in the calendar year.

##### Number of Races Divided Overnight

The number of different Flat races that were divided under the Rules of Racing because the number of horses declared to run exceeded the safety factor/maximum figure or field size limit of the race concerned or, in exceptional circumstances, to provide a sufficient number of races on the day due to other races on the card being abandoned.

### **Number of Horses Balloted Out or Eliminated**

The number of horses taken out of a Flat race under the Rules of Racing because the number left in at the declaration to run stage exceeded the safety factor/maximum figure or field size limit. These figures are for ALL Flat races, including abandoned races, so will not necessarily equate to the total number of eliminations in table D6, which is only for races that actually took place.

### **Jump Racing**

#### **Number of Different Horses Which Ran**

The total number of different horses which ran under Jump Rules in each calendar year.

#### **Average Number of Runs per Horse that Ran**

The number of individual different horses that ran under Jump Rules divided into the total number of Jump runners for each calendar year.

#### **Number of Different Winners**

The number of different horses that won a Jump race under Rules in the calendar year.

#### **Number of Races Divided Overnight**

The number of different Jump races that were divided under the Rules of Racing because the number of horses declared to run exceeded the safety factor/maximum figure or field size limit of the race concerned or, in exceptional circumstances, to provide a sufficient number of races on the day due to other races on the card being abandoned.

### **Number of Horses Balloted Out or Eliminated**

The number of horses taken out of a Jump race under the Rules of Racing because the number left in at the declaration to run stage exceeded the safety factor/maximum figure or field size limit. These figures are for ALL Jump races, including abandoned races, so will not necessarily equate to the total number of eliminations in tables D7, D8 and D9, which are only for races that actually took place.

## **TABLE 6**

### **Races, Entries, Runners, Eliminations and Prize Money by Type of Race – Flat**

An analysis of the number of Entries, Runners and Eliminations by types of Handicaps and types of Weight-for-Age races, together with Prize Money value and percentage of total Flat Prize Money for each type.

## **TABLE 7**

### **Races, Entries, Runners, Eliminations and Prize Money by Type of Race – Jump**

An analysis of the number of Entries, Runners and Eliminations by types of Handicaps and types of Weight-for-Age races, together with Prize Money value and percentage of total Jump Prize Money for each type.

## **TABLE 8**

### **Races, Entries, Runners, Eliminations and Prize Money by Distance of Race – Hurdle Races and National Hunt Flat Races**

An analysis of the number of Entries, Runners and Eliminations by Distance of Race in Handicaps and Weight-for-Age races for Hurdle Races and National Hunt Flat Races. Averages per race, together with Prize Money value and percentage of total Prize Money for Hurdle Races and National Hunt Flat Races for each Distance category are shown.

## **TABLE 9**

### **Races, Entries, Runners, Eliminations and Prize Money by Distance of Race – Steeple Chases**

An analysis of the number of Entries, Runners and Eliminations by Distance of Race in Handicaps and Weight-for-Age races for Steeple Chases. Averages per race, together with Prize Money value and percentage of total Prize Money for Steeple Chases for each Distance category are shown.

## **TABLE 10**

### **Prize Money by Source for Pattern Races – Flat Racing**

An analysis by Course of the source of Prize Money for Flat Pattern Races.

## **TABLE 11**

### **Prize Money by Source**

An analysis of the total Prize Money for the last 5 years, broken down by source.

## **TABLE 12**

### **Comparison of Flat and Jump Prize Money Pools**

An analysis of Flat Prize Money, Jump Prize Money and Total Prize Money by source.

## **TABLE 13**

### **Total Prize Money by Racecourse**

A comparison of the number of Fixtures and Prize Money by source for each Racecourse. A separate table is shown for Flat Racing, Jump Racing and All Racing.

## **TABLE 14**

### **Sponsored Number Cloth Income**

A breakdown by Racecourse (Flat, Jump and Total) of the income derived from the sponsoring of number cloths.

## **TABLE 15**

### **Prize Money Won Abroad by Horses Trained in Great Britain**

Win and Place Prize Money won abroad (i.e. not England, Scotland or Wales) by horses trained in Great Britain at the time of running.

### **Prize Money Won in Great Britain by Horses Trained outside of Great Britain**

Win and Place Prize Money won in Great Britain by horses showing a foreign Trainer in the Official Return sent in by the Clerk of the Scales from the Racecourse. The amount taken will be the Penalty Value shown.

## **TABLE 16**

### **Appearance Money**

The amount paid in Appearance Money payments for the last 5 years, under Schedule (F)11 of the Rules of Racing. A breakdown is shown of money paid in respect of Sunday Racing and that paid for races run on other days of the week.

### **Owners' Premiums**

The amount paid in Owners' Premiums for British Bred Horses in accordance with Rules of Racing. The Owners' Premium Scheme ran from January 1st, 2004 until December 31st, 2006.

## Prize Money and Race Statistics

### Fixtures

		2005		2006		2007		2008		2009
<b>Flat</b>										
Fixtures Programmed	(a)	811	(c)	842	(b,e,h)	868	(m,n)	945	(u)	926
Fixtures That Took Place	(b)	801	(d,e)	832		844	(o,p,q,r,s)	916	(n)	919
Fixtures Abandoned		11		10		23		29		5
<b>Jump</b>										
Fixtures Programmed		535		546	(i)	544		556		579
Fixtures That Took Place		496	(f,g)	506	(j)	482	(t)	505		505
Fixtures Abandoned		39		41		63		56	(v)	75
<b>Mixed</b>										
Fixtures Programmed		3		3		3		3		2
Fixtures That Took Place		3	(g)	4	(k)	4	(s)	2		2
Fixtures Abandoned		0		0		0		0		0
<b>All Racing</b>										
Fixtures Programmed		1,349		1,391		1,415		1,504		1,507
Fixtures That Took Place		1,300		1,342		1,330		1,423		1,426
Fixtures Abandoned		50		51		86		85		80
<b>(Of Which Evening)</b>										
Fixtures Programmed		221		229	(l)	287		372		331
Fixtures That Took Place		217		226		270	(n)	364	(n)	325
Fixtures Abandoned		4		3		16	(r)	7		4

#### Notes

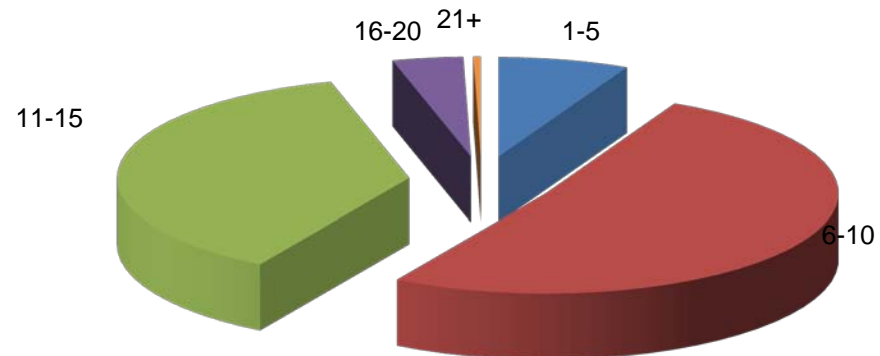
- (a) 216 All Weather Track fixtures programmed
- (b) 1 Additional AWT Flat fixture
- (c) 297 All Weather Track fixtures
- (d) 2 Additional Flat fixtures
- (e) 2 AWT fixtures cancelled
- (f) 1 additional Jump fixture
- (g) 1 Jump fixture abandoned and replaced by an additional AWT (Mixed) fixture
- (h) 316 All Weather Track fixtures programmed, 8 of which were transferred to Turf
- (i) 2 Additional Jump fixtures
- (j) 1 Jump fixture cancelled
- (k) 1 Additional Mixed (AWT) fixture
- (l) 1 Additional Evening fixture and 2 Evening fixtures cancelled
- (m) 361 All Weather Track Flat fixtures programmed
- (n) 2 All Weather Track Flat Evening fixtures withdrawn from the fixture list
- (o) 1 All Weather Track Flat fixture transferred to a Turf course
- (p) 1 Turf/AWT Flat fixture converted to AWT only
- (q) 1 AWT Flat fixture converted to Turf only
- (r) 1 abandoned Flat fixture replaced by an additional fixture
- (s) 1 Mixed fixture converted to a Flat fixture
- (t) 5 additional Jump fixtures, one of which was subsequently abandoned and one of which replaced another abandoned fixture
- (u) 331 All Weather Track Flat fixtures programmed
- (v) 1 Jump fixture abandoned and replaced by Flat AWT fixture

## Numbers of Runners in Races

### Flat Racing

**2009**

Runners	Number of Races												Total	% of All Races
	Jan	Feb	Mar	Apr	May	Jun	Jul	Aug	Sep	Oct	Nov	Dec		
1-5	29	49	32	31	37	63	61	60	36	26	10	20	<b>454</b>	<b>7.3%</b>
6-10	206	178	168	233	349	411	461	411	324	200	112	152	<b>3,205</b>	<b>51.2%</b>
11-15	94	62	74	175	277	260	246	272	289	318	152	105	<b>2,324</b>	<b>37.2%</b>
16-20	0	0	7	18	51	31	33	37	20	41	7	0	<b>245</b>	<b>3.9%</b>
21+	0	0	1	1	1	6	3	1	7	5	1	0	<b>26</b>	<b>0.4%</b>
<b>TOTAL</b>	<b>329</b>	<b>289</b>	<b>282</b>	<b>458</b>	<b>715</b>	<b>771</b>	<b>804</b>	<b>781</b>	<b>676</b>	<b>590</b>	<b>282</b>	<b>277</b>	<b>6,254</b>	<b>100.0%</b>



## Numbers of Runners in Races

### Jump Racing

**2009**

#### Hurdle Races and National Hunt Flat Races

Runners	Number of Races												Total	% of All Races
	Jan	Feb	Mar	Apr	May	Jun	Jul	Aug	Sep	Oct	Nov	Dec		
1-5	2	10	14	10	6	3	1	1	1	16	12	6	<b>82</b>	<b>4.1%</b>
6-10	45	83	94	90	88	43	45	37	30	76	134	68	<b>833</b>	<b>41.2%</b>
11-15	72	66	108	101	76	62	48	41	50	75	115	84	<b>898</b>	<b>44.4%</b>
16-20	26	22	39	21	14	8	4	6	9	10	16	20	<b>195</b>	<b>9.6%</b>
21+	1	0	8	4	1	0	0	0	0	0	1	0	<b>15</b>	<b>0.7%</b>
<b>TOTAL</b>	<b>146</b>	<b>181</b>	<b>263</b>	<b>226</b>	<b>185</b>	<b>116</b>	<b>98</b>	<b>85</b>	<b>90</b>	<b>177</b>	<b>278</b>	<b>178</b>	<b>2,023</b>	<b>100.0%</b>

#### Steeple Chases

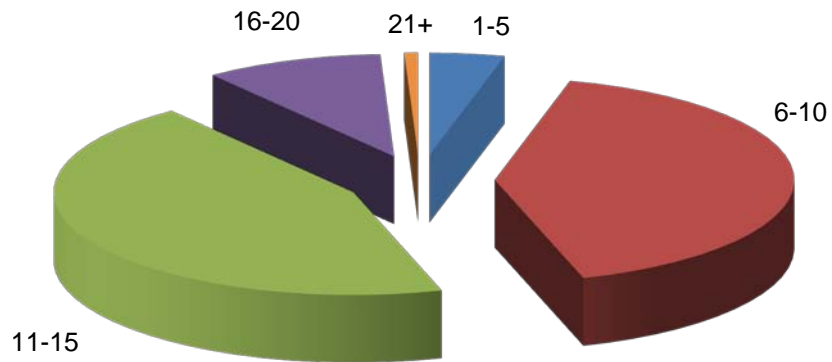
Runners	Number of Races												Total	% of All Races
	Jan	Feb	Mar	Apr	May	Jun	Jul	Aug	Sep	Oct	Nov	Dec		
1-5	11	34	47	35	17	3	7	7	4	28	43	23	<b>259</b>	<b>19.2%</b>
6-10	49	69	105	84	72	34	32	24	19	65	110	68	<b>731</b>	<b>54.1%</b>
11-15	30	20	38	35	39	13	16	12	16	15	37	30	<b>301</b>	<b>22.3%</b>
16-20	5	5	9	7	10	4	2	1	0	2	4	4	<b>53</b>	<b>3.9%</b>
21+	0	0	4	3	0	0	0	0	0	0	0	0	<b>7</b>	<b>0.5%</b>
<b>TOTAL</b>	<b>95</b>	<b>128</b>	<b>203</b>	<b>164</b>	<b>138</b>	<b>54</b>	<b>57</b>	<b>44</b>	<b>39</b>	<b>110</b>	<b>194</b>	<b>125</b>	<b>1,351</b>	<b>100.0%</b>

# Numbers of Runners in Races

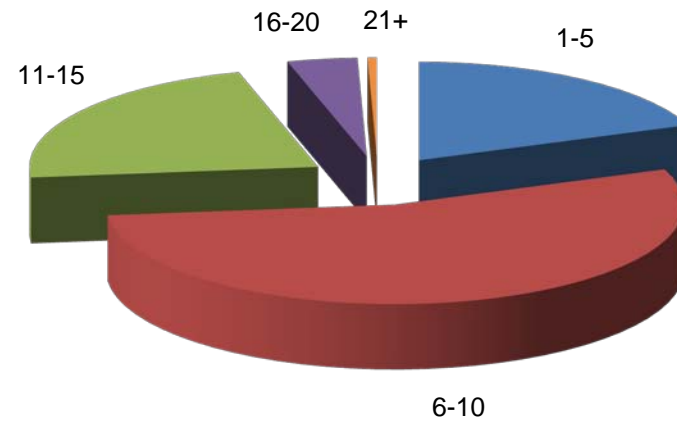
## Jump Racing

2009

### Hurdle Races and National Hunt Flat Races



### Steeple Chases



## Analysis of Racing by Size of Field

### Flat Races

Runners	2005		2006		2007		2008		2009	
	Number of Races	% of All Races	Number of Races	% of All Races	Number of Races	% of All Races	Number of Races	% of All Races	Number of Races	% of All Races
1-5	193	3.6%	295	5.3%	256	4.5%	426 <sup>(1)</sup>	7.0%	454	7.3%
6-10	2,014	38.0%	2,367	42.6%	2,536	44.8%	2,964	48.4%	3,205	51.2%
11-15	2,451	46.2%	2,518	45.3%	2,524	44.6%	2,398	39.1%	2,324	37.2%
16-20	611	11.5%	348	6.3%	310	5.5%	311	5.1%	245	3.9%
21+	32	0.6%	26	0.5%	33	0.6%	29	0.5%	26	0.4%
<b>TOTAL</b>	<b>5,301</b>	<b>100.0%</b>	<b>5,554</b>	<b>100.0%</b>	<b>5,659</b>	<b>100.0%</b>	<b>6,128</b>	<b>100.0%</b>	<b>6,254</b>	<b>100.0%</b>

### Jump Races

Runners	2005		2006		2007		2008		2009	
	Number of Races	% of All Races	Number of Races	% of All Races	Number of Races	% of All Races	Number of Races	% of All Races	Number of Races	% of All Races
1-5	245	7.5%	264	7.8%	317 <sup>(1)</sup>	9.9%	256	7.6%	341	10.1%
6-10	1,560	47.5%	1,565	46.3%	1,375	42.7%	1,431	42.5%	1,564	46.4%
11-15	1,113	33.9%	1,217	36.0%	1,189	36.9%	1,317	39.1%	1,199	35.5%
16-20	336	10.2%	305	9.0%	312	9.7%	333	9.9%	248	7.4%
21+	33	1.0%	29	0.9%	25	0.8%	29	0.9%	22	0.7%
<b>TOTAL</b>	<b>3,287</b>	<b>100.0%</b>	<b>3,380</b>	<b>100.0%</b>	<b>3,218</b>	<b>100.0%</b>	<b>3,366</b>	<b>100.0%</b>	<b>3,374</b>	<b>100.0%</b>

## Analysis of Racing by Size of Field

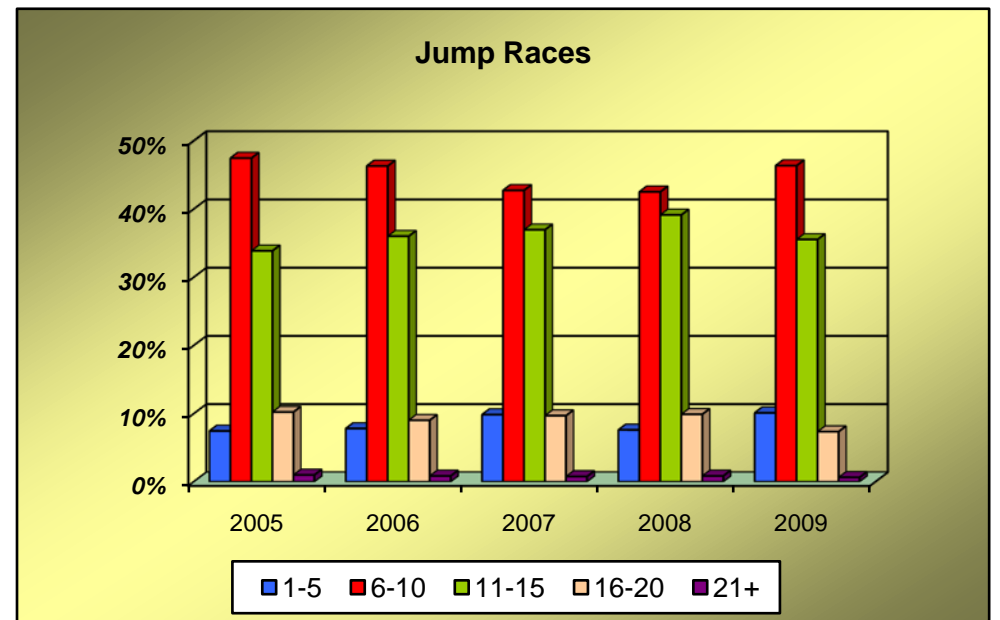
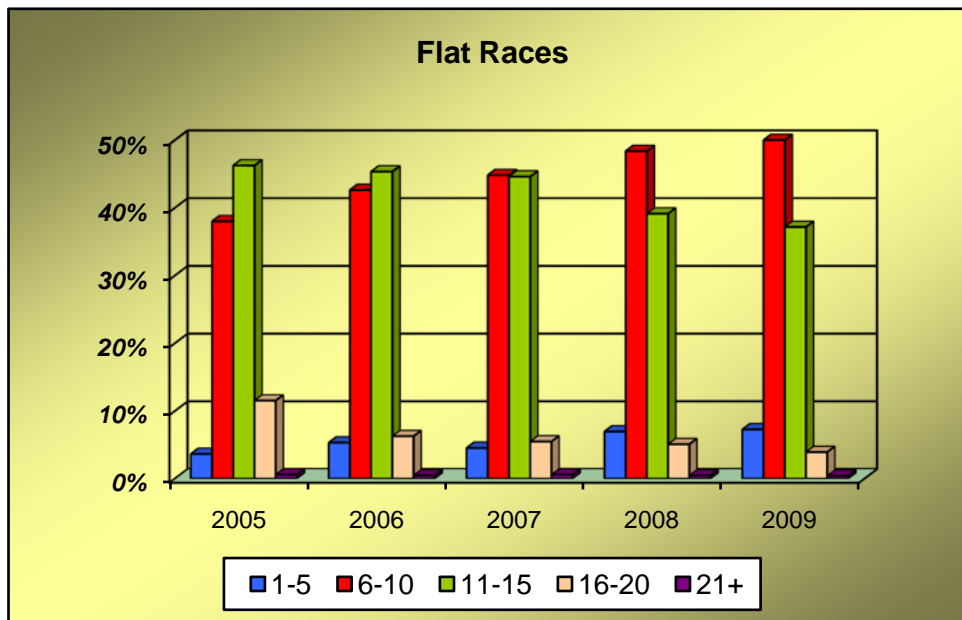
### Hurdle Races and National Hunt Flat Races

Runners	2005		2006		2007		2008		2009	
	Number of Races	% of All Races	Number of Races	% of All Races	Number of Races	% of All Races	Number of Races	% of All Races	Number of Races	% of All Races
1-5	57	2.9%	70	3.5%	72	3.8%	61	3.1%	82	4.1%
6-10	724	37.3%	759	37.8%	688	35.9%	657	32.9%	833	41.2%
11-15	849	43.7%	894	44.6%	877	45.8%	981	49.2%	898	44.4%
16-20	287	14.8%	266	13.3%	262	13.7%	272	13.6%	195	9.6%
21+	25	1.3%	17	0.8%	15	0.8%	23	1.2%	15	0.7%
<b>TOTAL</b>	<b>1,942</b>	<b>100.0%</b>	<b>2,006</b>	<b>100.0%</b>	<b>1,914</b>	<b>100.0%</b>	<b>1,994</b>	<b>100.0%</b>	<b>2,023</b>	<b>100.0%</b>

### Steeple Chases

Runners	2005		2006		2007		2008		2009	
	Number of Races	% of All Races	Number of Races	% of All Races	Number of Races	% of All Races	Number of Races	% of All Races	Number of Races	% of All Races
1-5	188	14.0%	194	14.1%	245 <sup>(1)</sup>	18.8%	195	14.2%	259	19.2%
6-10	836	62.2%	806	58.7%	687	52.7%	774	56.4%	731	54.1%
11-15	264	19.6%	323	23.5%	312	23.9%	336	24.5%	301	22.3%
16-20	49	3.6%	39	2.8%	50	3.8%	61	4.4%	53	3.9%
21+	8	0.6%	12	0.9%	10	0.8%	6	0.4%	7	0.5%
<b>TOTAL</b>	<b>1,345</b>	<b>100.0%</b>	<b>1,374</b>	<b>100.0%</b>	<b>1,304</b>	<b>100.0%</b>	<b>1,372</b>	<b>100.0%</b>	<b>1,351</b>	<b>100.0%</b>

## Analysis of Racing by Size of Field



## Analysis of Racing

### Number of Different Horses Which Ran, Number of Different Horses Which Won, Number of Races Divided Overnight, and Number of Horses Balloted Out Or Eliminated

#### Flat Racing

	2005	2006	2007	2008	2009
No. of Different Horses Which Ran as 2-y-o	3,100	2,952	3,226	3,313	3,176
No. of Different Horses Which Ran as 3-y-o	3,393	3,388	3,318	3,696	3,604
No. of Different Horses Which Ran as 4-y-o +	4,496	4,614	4,739	4,791	4,998
No. of Different Horses Which Ran - TOTAL	10,989	10,954	11,283	11,800	11,778
Average Number of Runs per Horse that Ran	5.5	5.4	5.3	5.3	5.3
No. of Different Horses Which Won a Race	3,552	3,641	3,782	4,016	4,057
No. of Races Divided Overnight	184	177	177	165	215
No. of Horses Balloted Out or Eliminated	14,758	13,982	12,653	10,876	10,924

#### Jump Racing

	2005	2006	2007	2008	2009
No. of Different Horses Which Ran	9,315	9,783	9,896	10,050	9,920
Average Number of Runs per Horse that Ran	3.7	3.6	3.4	3.6	3.4
No. of Different Horses Which Won a Race	2,291	2,325	2,267	2,327	2,350
No. of Races Divided Overnight	58	76	73	59	72
No. of Horses Balloted Out or Eliminated	1,996	4,451	4,907	5,292	3,839

## Racing and Prize Money Statistics

### Entries, Runners, Eliminations and Prize Money by Type of Race

#### Flat Races

2009

Type of Race	No. of Races	Entries		Runners		Eliminations		Value £	% of Total Value
		Total	Average	Total	Average	Total	Average		
<b>HANDICAPS</b>									
Sellers	13	314	24.2	159	12.2	41	3.2	46,650	0.1%
Apprentices	210	4,880	23.2	2,199	10.5	396	1.9	940,550	1.3%
Amateurs	98	2,245	22.9	1,214	12.4	263	2.7	439,350	0.6%
Others	3,490	82,634	23.7	35,533	10.2	8,108	2.3	30,094,718	40.9%
<b>Sub-Total</b>	<b>3,811</b>	<b>90,073</b>	<b>23.6</b>	<b>39,105</b>	<b>10.3</b>	<b>8,808</b>	<b>2.3</b>	<b>31,521,268</b>	<b>42.9%</b>
<b>WEIGHT FOR AGE</b>									
Sellers	260	5,906	22.7	2,605	10.0	380	1.5	865,050	1.2%
Claimers	315	6,514	20.7	2,651	8.4	248	0.8	1,149,006	1.6%
Maidens	1,325	33,580	25.3	12,946	9.8	765	0.6	7,232,937	9.8%
Novices	57	1,024	18.0	313	5.5	0	0.0	406,402	0.6%
Apprentices	20	442	22.1	213	10.7	35	1.8	62,500	0.1%
Amateurs	2	58	29.0	24	12.0	21	10.5	6,000	0.0%
Pattern	142	5,154	36.3	1,351	9.5	4	0.0	20,673,026	28.1%
Others	322	7,764	24.1	2,761	8.6	598	1.9	11,593,574	15.8%
<b>Sub-Total</b>	<b>2,443</b>	<b>60,442</b>	<b>24.7</b>	<b>22,864</b>	<b>9.4</b>	<b>2,051</b>	<b>0.8</b>	<b>41,988,495</b>	<b>57.1%</b>
<b>TOTAL</b>	<b>6,254</b>	<b>150,515</b>	<b>24.1</b>	<b>61,969</b>	<b>9.9</b>	<b>10,859</b>	<b>1.7</b>	<b>73,509,763</b>	<b>100.0%</b>

**Notes**

The above prize money figures have been rounded up or down as necessary. Consequently, the total prize money may not equate to the sum of the individual parts.

**Racing and Prize Money Statistics**  
**Entries, Runners, Eliminations and Prize Money by Type of Race**

**Jump Races**  
**2009**

Type of Race	No. of Races	Entries		Runners		Eliminations		Value £	% of Total Value
		Total	Average	Total	Average	Total	Average		
<b>HURDLE RACES</b>									
<b>HANDICAPS</b>									
Novices'	106	3,185	30.0	1,257	11.9	263	2.5	844,980	2.3%
Sellers	35	943	26.9	460	13.1	143	4.1	119,700	0.3%
Conditional Jockeys	101	3,381	33.5	1,271	12.6	294	2.9	578,700	1.6%
Amateurs	29	849	29.3	362	12.5	89	3.1	134,150	0.4%
Others	528	15,548	29.4	6,059	11.5	838	1.6	5,668,856	15.3%
<b>WEIGHT FOR AGE</b>									
Novices'	573	16,619	29.0	5,636	9.8	382	0.7	4,664,790	12.6%
Maidens	195	6,659	34.1	2,235	11.5	279	1.4	902,850	2.4%
Sellers	92	2,453	26.7	1,021	11.1	79	0.9	317,350	0.9%
Conditional Jockeys	20	577	28.9	200	10.0	3	0.2	80,150	0.2%
Amateurs	4	120	30.0	49	12.3	3	0.8	13,700	0.0%
Others	67	1,360	20.3	594	8.9	23	0.3	2,518,033	6.8%
National Hunt Flat Races	273	8,656	31.7	3,184	11.7	460	1.7	1,008,900	2.7%
<b>Sub-Total</b>	<b>2,023</b>	<b>60,350</b>	<b>29.8</b>	<b>22,328</b>	<b>11.0</b>	<b>2,856</b>	<b>1.4</b>	<b>16,852,159</b>	<b>45.6%</b>
<b>STEEPLE CHASES</b>									
<b>HANDICAPS</b>									
Novices'	134	2,997	22.4	1,196	8.9	76	0.6	1,162,012	3.1%
Sellers	6	119	19.8	62	10.3	3	0.5	24,200	0.1%
Conditional Jockeys	36	788	21.9	370	10.3	27	0.8	197,292	0.5%
Amateurs	11	300	27.3	120	10.9	24	2.2	156,450	0.4%
Hunters	2	38	19.0	24	12.0	0	0.0	16,000	0.0%
Others	657	15,047	22.9	6,348	9.7	417	0.6	10,579,479	28.6%
<b>WEIGHT FOR AGE</b>									
Novices'	348	6,136	17.6	2,115	6.1	8	0.0	4,164,405	11.3%
Maidens	13	248	19.1	115	8.8	0	0.0	71,500	0.2%
Amateurs	3	106	35.3	35	11.7	11	3.7	97,000	0.3%
Hunters	102	2,400	23.5	1,016	10.0	83	0.8	456,400	1.2%
Others	39	733	18.8	298	7.6	3	0.1	3,174,377	8.6%
<b>Sub-Total</b>	<b>1,351</b>	<b>28,912</b>	<b>21.4</b>	<b>11,699</b>	<b>8.7</b>	<b>652</b>	<b>0.5</b>	<b>20,099,115</b>	<b>54.4%</b>
<b>GRAND TOTAL</b>	<b>3,374</b>	<b>89,262</b>	<b>26.5</b>	<b>34,027</b>	<b>10.1</b>	<b>3,508</b>	<b>1.0</b>	<b>36,951,274</b>	<b>100.0%</b>

**Notes**

The above prize money figures have been rounded up or down as necessary. Consequently, the total prize money may not equate to the sum of the individual parts.

## Racing and Prize Money Statistics

### Entries, Runners, Eliminations and Prize Money by Distance of Race

#### Hurdle Races and National Hunt Flat Races

2009

Distance of Race	No. of Races	Entries		Runners		Eliminations		Value £	% of Total Value
		Total	Average	Total	Average	Total	Average		
<b>HANDICAPS</b>									
2 Miles	266	7,402	27.8	3,065	11.5	371	1.4	2,618,580	15.5%
2 ¼ Miles	80	2,285	28.6	911	11.4	104	1.3	579,635	3.4%
2 ½ Miles	198	6,333	32.0	2,397	12.1	610	3.1	1,922,071	11.4%
2 ¾ Miles	98	3,076	31.4	1,131	11.5	157	1.6	782,950	4.6%
3 Miles and over	157	4,810	30.6	1,905	12.1	385	2.5	1,443,150	8.6%
<b>Sub-Total</b>	<b>799</b>	<b>23,906</b>	<b>29.9</b>	<b>9,409</b>	<b>11.8</b>	<b>1,627</b>	<b>2.0</b>	<b>7,346,386</b>	<b>43.6%</b>
<b>WEIGHT FOR AGE</b>									
2 Miles	697	20,678	29.7	7,644	11.0	773	1.1	5,082,491	30.2%
2 ¼ Miles	130	3,710	28.5	1,288	9.9	106	0.8	595,100	3.5%
2 ½ Miles	239	7,626	31.9	2,461	10.3	241	1.0	2,015,863	12.0%
2 ¾ Miles	73	2,168	29.7	733	10.0	66	0.9	403,638	2.4%
3 Miles and over	85	2,262	26.6	793	9.3	43	0.5	1,408,682	8.4%
<b>Sub-Total</b>	<b>1,224</b>	<b>36,444</b>	<b>29.8</b>	<b>12,919</b>	<b>10.6</b>	<b>1,229</b>	<b>1.0</b>	<b>9,505,774</b>	<b>56.4%</b>
<b>TOTAL</b>	<b>2,023</b>	<b>60,350</b>	<b>29.8</b>	<b>22,328</b>	<b>11.0</b>	<b>2,856</b>	<b>1.4</b>	<b>16,852,159</b>	<b>100.0%</b>

**Notes**

The above prize money figures have been rounded up or down as necessary. Consequently, the total prize money may not equate to the sum of the individual parts.

## Racing and Prize Money Statistics

### Entries, Runners, Eliminations and Prize Money by Distance of Race

#### Steeple Chases

2009

Distance of Race	No. of Races	Entries		Runners		Eliminations		Value £	% of Total Value
		Total	Average	Total	Average	Total	Average		
<b>HANDICAPS</b>									
2 Miles	162	2,893	17.9	1,400	8.6	21	0.1	1,741,622	8.7%
2 ¼ Miles	61	1,207	19.8	566	9.3	7	0.1	579,781	2.9%
2 ½ Miles	209	4,773	22.8	1,931	9.2	98	0.5	2,626,297	13.1%
2 ¾ Miles	94	2,282	24.3	923	9.8	115	1.2	1,129,825	5.6%
3 Miles and over	320	8,134	25.4	3,300	10.3	306	1.0	6,057,908	30.1%
<b>Sub-Total</b>	<b>846</b>	<b>19,289</b>	<b>22.8</b>	<b>8,120</b>	<b>9.6</b>	<b>547</b>	<b>0.6</b>	<b>12,135,433</b>	<b>60.4%</b>
<b>WEIGHT FOR AGE</b>									
2 Miles	105	1,717	16.4	670	6.4	1	0.0	2,045,478	10.2%
2 ¼ Miles	34	678	19.9	257	7.6	1	0.0	366,959	1.8%
2 ½ Miles	135	2,647	19.6	946	7.0	11	0.1	1,780,424	8.9%
2 ¾ Miles	65	1,348	20.7	468	7.2	49	0.8	649,745	3.2%
3 Miles and over	166	3,233	19.5	1,238	7.5	43	0.3	3,121,076	15.5%
<b>Sub-Total</b>	<b>505</b>	<b>9,623</b>	<b>19.1</b>	<b>3,579</b>	<b>7.1</b>	<b>105</b>	<b>0.2</b>	<b>7,963,682</b>	<b>39.6%</b>
<b>TOTAL</b>	<b>1,351</b>	<b>28,912</b>	<b>21.4</b>	<b>11,699</b>	<b>8.7</b>	<b>652</b>	<b>0.5</b>	<b>20,099,115</b>	<b>100.0%</b>

**Notes**

The above prize money figures have been rounded up or down as necessary. Consequently, the total prize money may not equate to the sum of the individual parts.

## Prize Money by Source for Pattern Races

### Flat Racing

2009

Racecourse	No. of Races	Prize Money Contributions		
		Racecourse Executive plus Sponsors £	Owners' Contribution £	Total Prize Fund £
ASCOT	29	3,787,878	1,733,630	5,521,508
AYR	1	61,250	8,750	70,000
CHESTER	4	251,668	21,275	272,943
DONCASTER	8	985,400	373,300	1,358,700
EPSOM DOWNS	5	1,332,600	640,150	1,972,750
GOODWOOD	16	1,359,623	258,300	1,617,923
HAYDOCK PARK	5	492,150	131,400	623,550
KEMPTON PARK	2	102,775	12,225	115,000
LINGFIELD PARK	3	213,173	15,950	229,123
NEWBURY	12	858,465	141,535	1,000,000
NEWCASTLE	1	59,400	6,600	66,000
NEWMARKET	30	2,855,678	1,340,210	4,195,888
SALISBURY	1	61,500	3,500	65,000
SANDOWN PARK	8	785,850	224,150	1,010,000
WINDSOR	1	66,000	4,000	70,000
YORK	16	1,917,753	566,890	2,484,643
<b>TOTAL</b>	<b>142</b>	<b>15,191,161</b>	<b>5,481,865</b>	<b>20,673,026</b>

#### **NOTES**

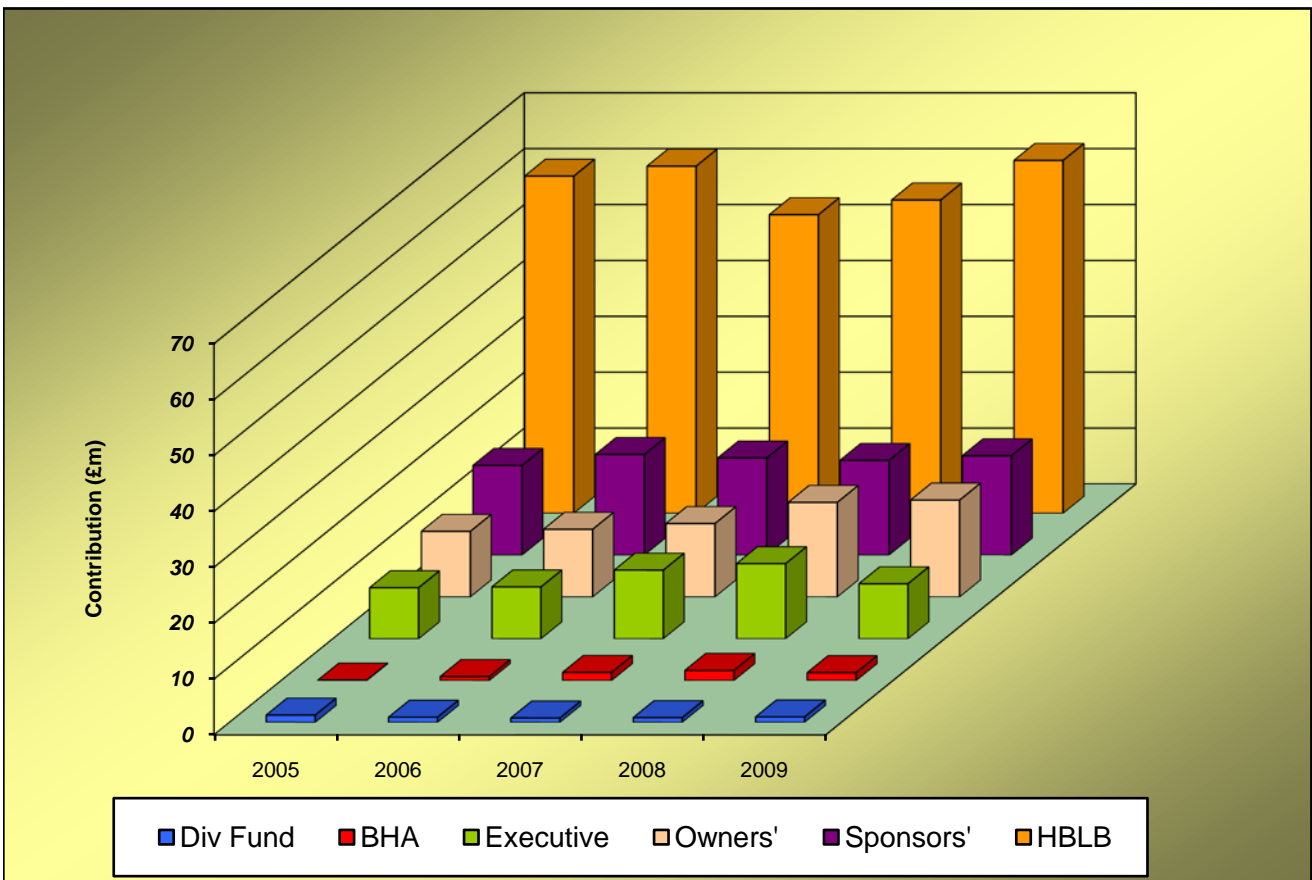
The above prize money figures have been rounded up or down as necessary. Consequently, the total prize money may not equate to the sum of the individual parts.

## Breakdown of Prize Money by Source

	£ Million						TOTAL
	Executive	Sponsors'	HBLB	Owners'	BHA	Div Fund	
<b>2005</b>	9.13	16.04	60.32	11.72	0.07	1.30	<b>98.57</b>
<b>2006</b>	9.26	18.00	62.10	12.10	0.71	0.92	<b>103.10</b>
<b>2007</b>	12.27	17.37	53.42	13.13	1.46	0.78	<b>98.43</b>
<b>2008</b>	13.42	16.95	56.06	16.91	1.81	0.85	<b>106.00</b>
<b>2009</b>	9.83	17.78	63.14	17.32	1.41	0.97	<b>110.46</b>

**Notes**

The above figures have been rounded to two decimal places.  
 Consequently, the TOTAL column will not always equate to the sum of the individual parts.



## Comparison of Flat/Jump Prize Money Pools

### Prize Money Statistics

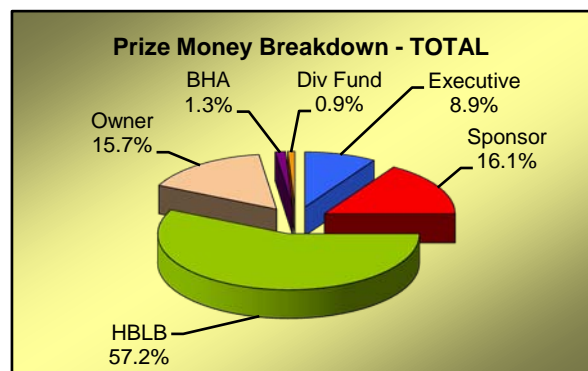
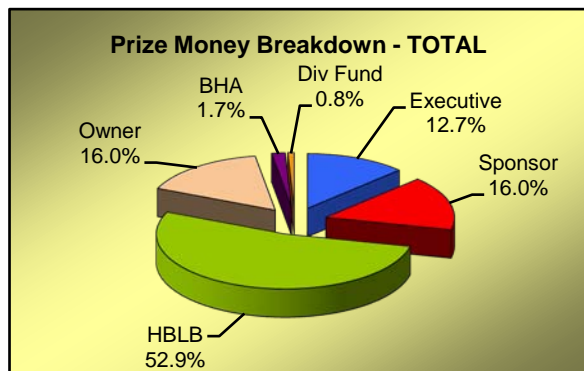
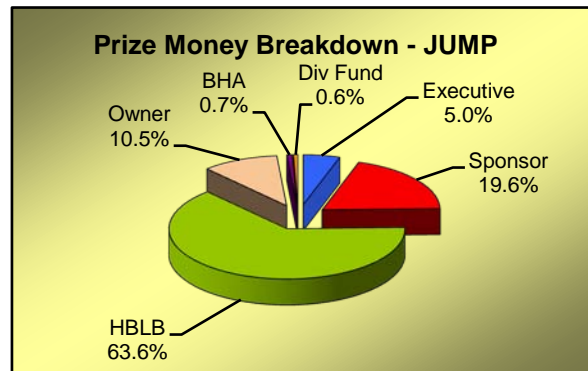
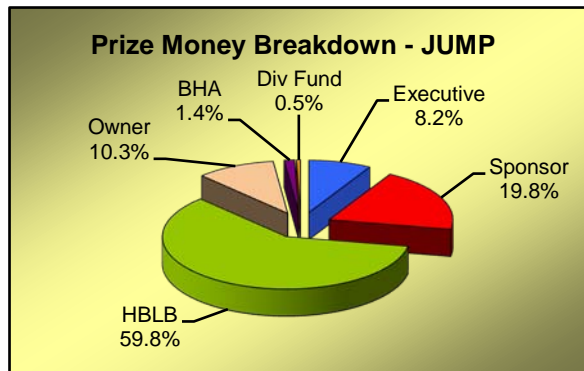
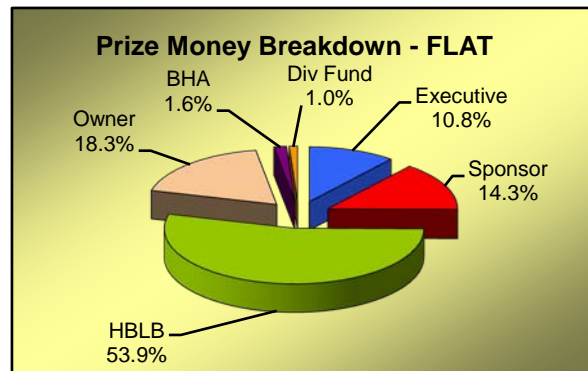
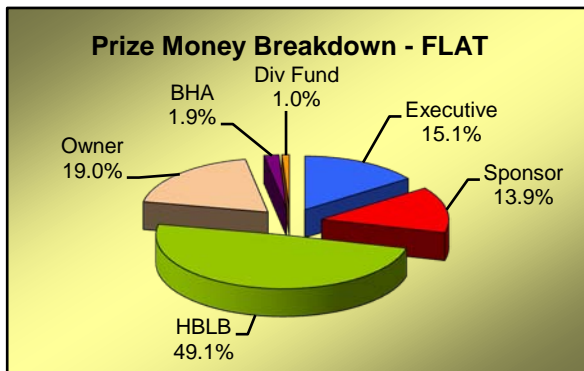
2008

	Flat	Jump	TOTAL
<b>Executive</b>	10,372,765	3,052,157	<b>13,424,922</b>
<b>Sponsor</b>	9,571,099	7,379,031	<b>16,950,130</b>
<b>HBLB</b>	33,757,268	22,301,997	<b>56,059,265</b>
<b>Owner</b>	13,064,969	3,844,172	<b>16,909,141</b>
<b>BHA</b>	1,303,256	508,500	<b>1,811,756</b>
<b>Div Fund</b>	653,300	192,000	<b>845,300</b>
<b>TOTAL</b>	<b>68,722,658</b>	<b>37,277,856</b>	<b>106,000,514</b>

### Prize Money Statistics

2009

	Flat	Jump	TOTAL
<b>Executive</b>	7,974,056	1,859,364	<b>9,833,419</b>
<b>Sponsor</b>	10,542,718	7,235,181	<b>17,777,899</b>
<b>HBLB</b>	39,644,428	23,491,777	<b>63,136,205</b>
<b>Owner</b>	13,453,611	3,871,002	<b>17,324,613</b>
<b>BHA</b>	1,143,000	271,500	<b>1,414,500</b>
<b>Div Fund</b>	751,950	222,450	<b>974,400</b>
<b>TOTAL</b>	<b>73,509,763</b>	<b>36,951,274</b>	<b>110,461,037</b>



**Notes**

The above figures have been rounded up or down as necessary. Consequently, the totals will not always equate to the sum of the individual parts.

## Total Prize Money by Racecourse Flat Racing - 2009

	Fixtures Ran (Aban)	Exec+Spons	HBLB	Owners	BHA	Div Fund	TOTAL
ASCOT	17	3,570,036	2,465,200	2,225,427	67,500	0	8,328,163
AYR	16	318,568	730,980	161,602	11,000	26,000	1,248,150
BATH	21	143,186	515,667	67,034	10,000	3,000	738,886
BEVERLEY	19	175,638	574,590	62,172	28,500	8,750	849,650
BRIGHTON	20	46,472	529,070	66,035	0	6,300	647,877
CARLISLE	8	58,135	232,740	37,390	0	0	328,265
CATTERICK BRIDGE	18	30,108	488,823	41,205	7,500	19,500	587,136
CHEPSTOW	14	40,531	297,000	45,519	2,000	14,000	399,050
CHESTER	13	480,147	887,710	80,560	49,000	0	1,497,417
DONCASTER	23	1,070,315	1,685,600	988,622	57,500	31,500	3,833,537
EPSOM DOWNS	14	1,191,553	998,360	737,857	25,000	0	2,952,770
FFOS LAS	3	31,394	120,000	14,106	0	3,000	168,500
FOLKESTONE	15	44,175	382,010	48,975	0	3,000	478,160
GOODWOOD	23	1,174,931	1,997,170	512,426	64,000	4,000	3,752,527
GREAT LEIGHS	4	-790	103,000	6,190	0	0	108,400
HAMILTON PARK	18 (1)	224,282	513,800	55,777	34,000	2,500	830,359
HAYDOCK PARK	23	721,517	1,232,144	360,689	52,000	8,000	2,374,350
KEMPTON PARK	86	207,460	2,928,970	334,183	59,000	86,550	3,616,163
LEICESTER	20	211,705	549,897	69,551	46,000	13,000	890,153
LINGFIELD PARK	93	586,266	2,901,660	321,708	77,500	102,850	3,989,984
MUSSELBURGH	17	228,524	480,380	54,096	20,000	3,000	786,000
NEWBURY	18	617,086	1,454,030	413,384	70,000	78,000	2,632,500
NEWCASTLE	19	254,661	667,900	137,968	5,000	17,150	1,082,679
NEWMARKET	38	2,994,179	3,731,210	3,742,521	154,500	28,000	10,650,410
NOTTINGHAM	20	106,637	539,510	114,287	40,000	28,500	828,934
PONTEFRACT	16	202,764	692,640	63,887	27,500	22,000	1,008,791
REDCAR	18 (1)	88,061	534,200	221,739	6,000	4,000	854,000
RIPON	15	211,040	583,990	66,175	26,000	5,000	892,205
SALISBURY	16	216,935	623,180	84,684	39,000	33,700	997,499
SANDOWN PARK	19	554,123	1,410,535	362,382	41,500	0	2,368,540
SOUTHWELL	64	5,366	1,877,490	154,309	2,000	35,200	2,074,365
THIRSK	14	144,504	476,840	79,251	12,500	21,100	734,195
WARWICK	13	66,228	408,830	63,552	13,000	17,250	568,860
WINDSOR	27	236,486	785,250	120,568	31,000	20,000	1,193,304
WOLVERHAMPTON	98 (3)	26,342	3,024,872	306,461	10,000	82,500	3,450,175
YARMOUTH	24	136,432	571,720	100,714	9,500	24,600	842,966
YORK	17	2,101,778	1,647,460	1,130,605	45,000	0	4,924,843
<b>TOTAL</b>	<b>921 (5)</b>	<b>18,516,774</b>	<b>39,644,428</b>	<b>13,453,611</b>	<b>1,143,000</b>	<b>751,950</b>	<b>73,509,763</b>

### Notes

The above figures have been rounded up or down as necessary. Consequently, the totals will not always equate to the sum of the individual parts. Mixed meetings are included with the Flat figures.

## Total Prize Money by Racecourse Jump Racing - 2009

	Fixtures Ran	(Aban)	Exec+Spons	HBLB	Owners	BHA	Div Fund	TOTAL
AINTREE	9		1,652,752	1,185,950	459,890	0	0	3,298,592
ASCOT	6	(2)	511,576	649,300	77,381	25,000	0	1,263,257
AYR	10	(3)	161,498	586,530	132,848	15,000	3,300	899,176
BANGOR-ON-DEE	14	(1)	95,365	576,190	39,320	1,500	9,750	722,125
CARLISLE	10	(3)	90,115	368,650	42,135	0	0	500,900
CARTMEL	6		31,670	162,360	25,370	0	0	219,400
CATTERICK BRIDGE	6	(4)	45,547	133,710	18,543	0	0	197,800
CHEL TENHAM	17		2,997,024	2,013,740	894,923	80,000	4,000	5,989,687
CHEPSTOW	14	(1)	143,957	572,870	96,646	20,000	8,500	841,973
DONCASTER	8		288,509	413,417	100,513	25,000	8,000	835,439
EXETER	14	(2)	26,460	640,243	78,349	0	2,500	747,552
FAKENHAM	10	(1)	83,250	319,225	0	0	0	402,475
FFOS LAS	6		88,138	223,200	30,994	0	0	342,332
FOLKESTONE	7	(2)	445	245,460	27,595	1,500	0	275,000
FONTWELL PARK	21	(2)	59,981	754,740	87,086	0	0	901,807
HAYDOCK PARK	7	(2)	533,424	600,886	127,275	28,000	0	1,289,585
HEREFORD	13	(2)	40,826	471,420	68,016	0	3,300	583,562
HEXHAM	13	(2)	-1,881	434,900	47,681	0	6,800	487,500
HUNTINGDON	16	(3)	65,594	554,790	71,581	0	11,500	703,465
KELSO	13	(2)	107,681	548,820	38,211	0	9,500	704,212
KEMPTON PARK	12	(1)	274,518	981,600	127,591	20,000	6,500	1,410,209
LEICESTER	7	(4)	18,847	268,680	27,645	0	0	315,172
LINGFIELD PARK	5	(2)	221	229,270	23,920	0	0	253,411
LUDLOW	14	(2)	109,418	576,040	49,530	1,500	0	736,488
MARKET RASEN	19	(3)	92,403	795,170	88,198	1,500	4,000	981,271
MUSSELBURGH	7	(4)	30,520	292,420	21,560	0	4,000	348,500
NEWBURY	10	(2)	167,337	890,800	124,710	14,500	5,000	1,202,347
NEWCASTLE	8	(3)	111,507	344,820	52,806	0	4,400	513,533
NEWTON ABBOT	18		21,911	627,240	5,264	0	20,300	674,715
PERTH	12	(1)	79,462	488,770	45,857	0	5,000	619,089
PLUMPTON	13	(3)	1,827	425,300	29,565	0	4,000	460,692
SANDOWN PARK	8	(1)	430,762	785,575	121,535	0	0	1,337,872
SEDFIELD	15	(4)	91,058	261,010	48,032	0	8,400	408,500
SOUTHWELL	14	(1)	15,727	465,190	64,076	0	9,100	554,093
STRATFORD-ON-AVON	18		202,515	664,870	66,201	1,500	16,000	951,086
TAUNTON	13	(1)	28,461	512,810	40,549	0	18,700	600,520
TOWCESTER	16	(1)	4,976	545,800	52,990	0	0	603,766
UTTOXETER	23	(2)	99,283	799,850	144,690	0	11,000	1,054,823
WARWICK	8	(2)	-4,002	336,700	43,950	0	0	376,648
WETHERBY	13	(5)	132,830	545,600	57,994	20,000	3,000	759,424
WINCANTON	16	(1)	149,044	734,550	102,657	16,500	9,500	1,012,251
WORCESTER	16		13,987	463,312	67,325	0	26,400	571,024
<b>TOTAL</b>	<b>505</b>	<b>(75)</b>	<b>9,094,545</b>	<b>23,491,777</b>	<b>3,871,002</b>	<b>271,500</b>	<b>222,450</b>	<b>36,951,274</b>

### Notes

The above figures have been rounded up or down as necessary. Consequently, the totals will not always equate to the sum of the individual parts.

## Total Prize Money by Racecourse All Racing - 2009

	Fixtures Ran (Aban)	Exec+Spons	HBLB	Owners	BHA	Div Fund	TOTAL
AINTREE	9	1,652,752	1,185,950	459,890	0	0	3,298,592
ASCOT	23 (2)	4,081,612	3,114,500	2,302,808	92,500	0	9,591,420
AYR	26 (3)	480,066	1,317,510	294,450	26,000	29,300	2,147,326
BANGOR-ON-DEE	14 (1)	95,365	576,190	39,320	1,500	9,750	722,125
BATH	21	143,186	515,667	67,034	10,000	3,000	738,886
BEVERLEY	19	175,638	574,590	62,172	28,500	8,750	849,650
BRIGHTON	20	46,472	529,070	66,035	0	6,300	647,877
CARLISLE	18 (3)	148,250	601,390	79,525	0	0	829,165
CARTMEL	6	31,670	162,360	25,370	0	0	219,400
CATTERICK BRIDGE	24 (4)	75,655	622,533	59,748	7,500	19,500	784,936
CHELTENHAM	17	2,997,024	2,013,740	894,923	80,000	4,000	5,989,687
CHEPSTOW	28 (1)	184,488	869,870	142,165	22,000	22,500	1,241,023
CHESTER	13	480,147	887,710	80,560	49,000	0	1,497,417
DONCASTER	31	1,358,824	2,099,017	1,089,135	82,500	39,500	4,668,976
EPSOM DOWNS	14	1,191,553	998,360	737,857	25,000	0	2,952,770
EXETER	14 (2)	26,460	640,243	78,349	0	2,500	747,552
FAKENHAM	10 (1)	83,250	319,225	0	0	0	402,475
FFOS LAS	9	119,532	343,200	45,100	0	3,000	510,832
FOLKESTONE	22 (2)	44,620	627,470	76,570	1,500	3,000	753,160
FONTWELL PARK	21 (2)	59,981	754,740	87,086	0	0	901,807
GOODWOOD	23	1,174,931	1,997,170	512,426	64,000	4,000	3,752,527
GREAT LEIGHS	4	-790	103,000	6,190	0	0	108,400
HAMILTON PARK	18 (1)	224,282	513,800	55,777	34,000	2,500	830,359
HAYDOCK PARK	30 (2)	1,254,941	1,833,030	487,964	80,000	8,000	3,663,935
HEREFORD	13 (2)	40,826	471,420	68,016	0	3,300	583,562
HEXHAM	13 (2)	-1,881	434,900	47,681	0	6,800	487,500
HUNTINGDON	16 (3)	65,594	554,790	71,581	0	11,500	703,465
KELSO	13 (2)	107,681	548,820	38,211	0	9,500	704,212
KEMPTON PARK	98 (1)	481,978	3,910,570	461,774	79,000	93,050	5,026,372
LEICESTER	27 (4)	230,552	818,577	97,196	46,000	13,000	1,205,324
LINGFIELD PARK	98 (2)	586,487	3,130,930	345,628	77,500	102,850	4,243,395
LUDLOW	14 (2)	109,418	576,040	49,530	1,500	0	736,488
MARKET RASEN	19 (3)	92,403	795,170	88,198	1,500	4,000	981,271
MUSSELBURGH	24 (4)	259,044	772,800	75,656	20,000	7,000	1,134,500
NEWBURY	28 (2)	784,423	2,344,830	538,094	84,500	83,000	3,834,847
NEWCASTLE	27 (3)	366,168	1,012,720	190,774	5,000	21,550	1,596,212
NEWMARKET	38	2,994,179	3,731,210	3,742,521	154,500	28,000	10,650,410
NEWTON ABBOT	18	21,911	627,240	5,264	0	20,300	674,715
NOTTINGHAM	20	106,637	539,510	114,287	40,000	28,500	828,934
PERTH	12 (1)	79,462	488,770	45,857	0	5,000	619,089
PLUMPTON	13 (3)	1,827	425,300	29,565	0	4,000	460,692
PONTEFRACT	16	202,764	692,640	63,887	27,500	22,000	1,008,791
REDCAR	18 (1)	88,061	534,200	221,739	6,000	4,000	854,000
RIPON	15	211,040	583,990	66,175	26,000	5,000	892,205
SALISBURY	16	216,935	623,180	84,684	39,000	33,700	997,499
SANDOWN PARK	27 (1)	984,885	2,196,110	483,917	41,500	0	3,706,412
SEDFIELD	15 (4)	91,058	261,010	48,032	0	8,400	408,500
SOUTHWELL	78 (1)	21,093	2,342,680	218,385	2,000	44,300	2,628,458
STRATFORD-ON-AVON	18	202,515	664,870	66,201	1,500	16,000	951,086
TAUNTON	13 (1)	28,461	512,810	40,549	0	18,700	600,520
THIRSK	14	144,504	476,840	79,251	12,500	21,100	734,195
TOWCESTER	16 (1)	4,976	545,800	52,990	0	0	603,766
UTTOXETER	23 (2)	99,283	799,850	144,690	0	11,000	1,054,823
WARWICK	21 (2)	62,226	745,530	107,502	13,000	17,250	945,508
WETHERBY	13 (5)	132,830	545,600	57,994	20,000	3,000	759,424
WINCANTON	16 (1)	149,044	734,550	102,657	16,500	9,500	1,012,251
WINDSOR	27	236,486	785,250	120,568	31,000	20,000	1,193,304
WOLVERHAMPTON	98 (3)	26,342	3,024,872	306,461	10,000	82,500	3,450,175
WORCESTER	16	13,987	463,312	67,325	0	26,400	571,024
YARMOUTH	24	136,432	571,720	100,714	9,500	24,600	842,966
YORK	17	2,101,778	1,647,460	1,130,605	45,000	0	4,924,843
<b>TOTAL</b>	<b>1,426 (80)</b>	<b>27,611,318</b>	<b>63,136,205</b>	<b>17,324,613</b>	<b>1,414,500</b>	<b>974,400</b>	<b>110,461,037</b>

### Notes

The above figures have been rounded up or down as necessary. Consequently, the totals will not always equate to the sum of the individual parts. Mixed meetings are included with the Flat figures.

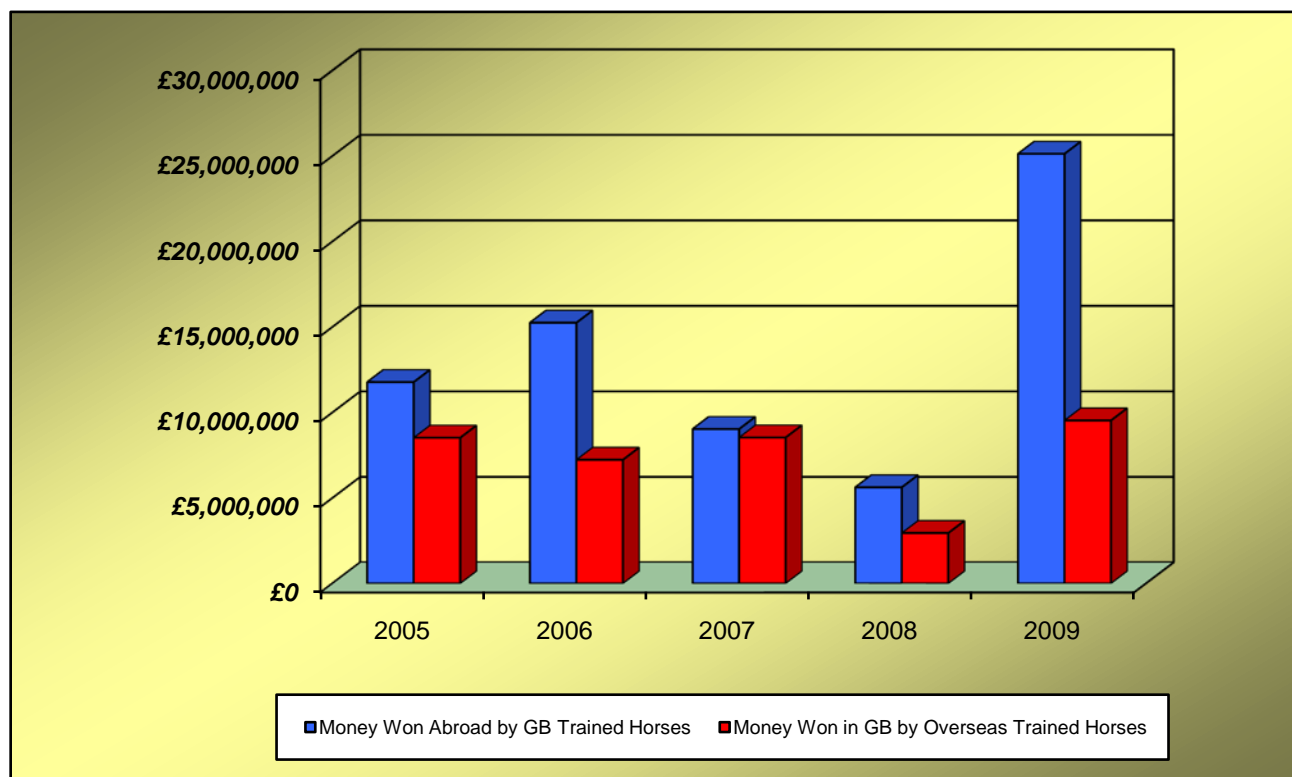
## Sponsored Number Cloth Income

**2009**

	FLAT	JUMP	TOTAL
AINTREE		16,750	16,750
ASCOT	33,250	8,500	41,750
AYR	3,250	2,000	5,250
BANGOR-ON-DEE		500	500
BATH	0		0
BEVERLEY	1,000		1,000
BRIGHTON	0		0
CARLISLE	0	500	500
CARTMEL		0	0
CATTERICK BRIDGE	0	0	0
CHELTENHAM		22,250	22,250
CHEPSTOW	0	3,250	3,250
CHESTER	8,750		8,750
DONCASTER	10,750	2,250	13,000
EPSOM DOWNS	8,000		8,000
EXETER		250	250
FAKENHAM		0	0
FFOS LAS	0	250	250
FOLKESTONE	0	0	0
FONTWELL PARK		500	500
GOODWOOD	12,750		12,750
GREAT LEIGHS	0		0
HAMILTON PARK	750		750
HAYDOCK PARK	9,000	5,500	14,500
HEREFORD		0	0
HEXHAM		0	0
HUNTINGDON		0	0
KELSO		250	250
KEMPTON PARK	9,500	6,000	15,500
LEICESTER	0	0	0
LINGFIELD PARK	6,500	0	6,500
LUDLOW		0	0
MARKET RASEN		3,000	3,000
MUSSELBURGH	1,750	0	1,750
NEWBURY	13,500	4,500	18,000
NEWCASTLE	4,000	2,000	6,000
NEWMARKET	30,500		30,500
NEWTON ABBOT		0	0
NOTTINGHAM	1,500		1,500
PERTH		0	0
PLUMPTON		0	0
PONTEFRACT	250		250
REDCAR	500		500
RIPON	1,750		1,750
SALISBURY	1,000		1,000
SANDOWN PARK	5,000	7,750	12,750
SEDFIELD		0	0
SOUTHWELL	0	0	0
STRATFORD-ON-AVON		0	0
TAUNTON		0	0
THIRSK	0		0
TOWCESTER		0	0
UTTOXETER		3,500	3,500
WARWICK	250	0	250
WETHERBY		3,500	3,500
WINCANTON		3,500	3,500
WINDSOR	250		250
WOLVERHAMPTON	1,000		1,000
WORCESTER		0	0
YARMOUTH	0		0
YORK	21,000		21,000
<b>TOTAL</b>	<b>185,750</b>	<b>96,500</b>	<b>282,250</b>

## Prize Money Entering and Leaving Great Britain

	2005	2006	2007	2008	2009
<b>Prize Money WON ABROAD</b>					
by horses trained in Great Britain	11,777,096	15,247,516	9,028,843	5,621,876	25,124,821
<b>Prize Money WON IN GREAT BRITAIN</b>					
by horses trained outside of Great Britain	8,521,477	7,231,583	8,533,123	2,947,770	9,531,883



## Appearance Money and Owners' Premium Payments

	2005	2006	2007	2008	2009
	£	£	£	£	£
<b>APPEARANCE MONEY</b>					
Sundays	1,795,330	1,925,050	1,229,840	1,069,450	1,087,350
Other Days	816,510	1,150,950	318,800	398,500	391,100
<b>TOTAL</b>	<b>2,611,840</b>	<b>3,076,000</b>	<b>1,548,640</b>	<b>1,467,950</b>	<b>1,478,450</b>
<b>OWNERS' PREMIUMS</b>					
	446,860	707,854	N/A	N/A	N/A

