

## SECTION D

### FIXTURES, RACES AND PRIZE MONEY

#### TABLE 1

##### Fixtures

A fixture is defined as **one** day's racing at **one** course.

#### TABLE 2

##### Field Sizes - Flat

The number of Runners (1-5, 6-10, 11-15, 16-20 and 21+) in the number of races shown monthly for Flat races. The number of Walkovers (if any) is shown separately.

#### TABLE 3

##### Field Sizes - Jump

The number of Runners (1-5, 6-10, 11-15, 16-20 and 21+) in the number of races shown monthly for Hurdle Races and National Hunt Flat Races, and for Steeple Chases. The number of Walkovers (if any) is shown separately.

#### TABLE 4

##### Field Sizes – Flat and Jump

The number of Runners (1-5, 6-10, 11-15, 16-20 and 21+) in the number of races shown as a total for each of the last 5 years for Flat races and Jump races. A separate table for Hurdle Races and National Hunt Flat Races and for Steeple Chases is also shown. The number of Walkovers (if any) is shown separately.

#### TABLE 5

##### Flat Racing

##### Number of Different Horses Which Ran – by Age

An analysis of the number of different horses which ran on the Flat under Rules in each calendar year as 2 years old, 3 years old, 4 years old and over and in total.

##### Average Number of Runs per Horse that Ran

The number of individual different horses that ran on the Flat divided into the total number of Flat runners for each year.

##### Number of Different Winners

The number of different horses which won a Flat race under Rules in the calendar year.

##### Number of Races Divided Overnight

The number of different Flat races that were divided under the Rules of Racing because the number of horses declared to run exceeded the safety factor/maximum figure or field size limit of the race concerned or, in exceptional circumstances, to provide a sufficient number of races on the day due to other races on the card being abandoned.

### **Number of Horses Balloted Out or Eliminated**

The number of horses taken out of a Flat race under the Rules of Racing because the number left in at the declaration to run stage exceeded the safety factor/maximum figure or field size limit. These figures are for ALL Flat races, including abandoned races, so will not necessarily equate to the total number of eliminations in table D6, which is only for races that actually took place.

### **Jump Racing**

#### **Number of Different Horses Which Ran**

The total number of different horses which ran under Jump Rules in each calendar year.

#### **Average Number of Runs per Horse that Ran**

The number of individual different horses that ran under Jump Rules divided into the total number of Jump runners for each calendar year.

#### **Number of Different Winners**

The number of different horses that won a Jump race under Rules in the calendar year.

#### **Number of Races Divided Overnight**

The number of different Jump races that were divided under the Rules of Racing because the number of horses declared to run exceeded the safety factor/maximum figure or field size limit of the race concerned or, in exceptional circumstances, to provide a sufficient number of races on the day due to other races on the card being abandoned.

### **Number of Horses Balloted Out or Eliminated**

The number of horses taken out of a Jump race under the Rules of Racing because the number left in at the declaration to run stage exceeded the safety factor/maximum figure or field size limit. These figures are for ALL Jump races, including abandoned races, so will not necessarily equate to the total number of eliminations in tables D7, D8 and D9, which are only for races that actually took place.

## **TABLE 6**

### **Races, Entries, Runners, Eliminations and Prize Money by Type of Race – Flat**

An analysis of the number of Entries, Runners and Eliminations by types of Handicaps and types of Weight-for-Age races, together with Prize Money value and percentage of total Flat Prize Money for each type.

## **TABLE 7**

### **Races, Entries, Runners, Eliminations and Prize Money by Type of Race – Jump**

An analysis of the number of Entries, Runners and Eliminations by types of Handicaps and types of Weight-for-Age races, together with Prize Money value and percentage of total Jump Prize Money for each type.

## **TABLE 8**

### **Races, Entries, Runners, Eliminations and Prize Money by Distance of Race – Hurdle Races and National Hunt Flat Races**

An analysis of the number of Entries, Runners and Eliminations by Distance of Race in Handicaps and Weight-for-Age races for Hurdle Races and National Hunt Flat Races. Averages per race, together with Prize Money value and percentage of total Prize Money for Hurdle Races and National Hunt Flat Races for each Distance category are shown.

## **TABLE 9**

### **Races, Entries, Runners, Eliminations and Prize Money by Distance of Race – Steeple Chases**

An analysis of the number of Entries, Runners and Eliminations by Distance of Race in Handicaps and Weight-for-Age races for Steeple Chases. Averages per race, together with Prize Money value and percentage of total Prize Money for Steeple Chases for each Distance category are shown.

## **TABLE 10**

### **Prize Money by Source for Pattern Races – Flat Racing**

An analysis by Course of the source of Prize Money for Flat Pattern Races.

## **TABLE 11**

### **Prize Money by Source**

An analysis of the total Prize Money for the last 5 years, broken down by source.

## **TABLE 12**

### **Comparison of Flat and Jump Prize Money Pools**

An analysis of Flat Prize Money, Jump Prize Money and Total Prize Money by source.

## **TABLE 13**

### **Total Prize Money by Racecourse**

A comparison of the number of Fixtures and Prize Money by source for each Racecourse. A separate table is shown for Flat Racing, Jump Racing and All Racing.

## **TABLE 14**

### **Sponsored Number Cloth Income**

A breakdown by Racecourse (Flat, Jump and Total) of the income derived from the sponsoring of number cloths.

## **TABLE 15**

### **Prize Money Won Abroad by Horses Trained in Great Britain**

Win and Place Prize Money won abroad (i.e. not England, Scotland or Wales) by horses trained in Great Britain at the time of running.

### **Prize Money Won in Great Britain by Horses Trained outside of Great Britain**

Win and Place Prize Money won in Great Britain by horses showing a foreign Trainer in the Official Return sent in by the Clerk of the Scales from the Racecourse. The amount taken will be the Penalty Value shown.

## **TABLE 16**

### **Appearance Money**

The amount paid in Appearance Money payments for the last 5 years, under Schedule (F)11 of the Rules of Racing. A breakdown is shown of money paid in respect of Sunday Racing and that paid for races run on other days of the week.

### **Owners' Premiums**

The amount paid in Owners' Premiums for British Bred Horses in accordance with Rules of Racing. The Owners' Premium Scheme ran from January 1st, 2004 until December 31st, 2006.

## Prize Money and Race Statistics

### Fixtures

		2006		2007		2008		2009		2010
<b>Flat</b>										
Fixtures Programmed	(a)	842	(c,f,g)	868	(k,l)	945	(s)	926	(u)	909
Fixtures That Took Place	(b,c)	832	(m,n,o,p,q)	844	(l)	919	(v)	905		
Fixtures Abandoned		10		23		29		5		20
<b>Jump</b>										
Fixtures Programmed		546		544		556		579		591
Fixtures That Took Place	(d,e)	506	(h)	482	(r)	505	(w,x)	481		
Fixtures Abandoned		41		63		56	(t)	75		120
<b>Mixed</b>										
Fixtures Programmed		3		3		3		2		3
Fixtures That Took Place	(e)	4	(i)	4	(q)	2	(x,y)	6		
Fixtures Abandoned		0		0		0		0		1
<b>All Racing</b>										
Fixtures Programmed		1,391		1,415		1,504		1,507		1,503
Fixtures That Took Place		1,342		1,330		1,423		1,426		1,392
Fixtures Abandoned		51		86		85		80		141
<b>(Of Which Evening)</b>										
Fixtures Programmed		229	(j)	287		372		331		326
Fixtures That Took Place		226		270	(l)	364	(l)	325	(z)	268
Fixtures Abandoned		3		16	(p)	7		4		2

#### Notes

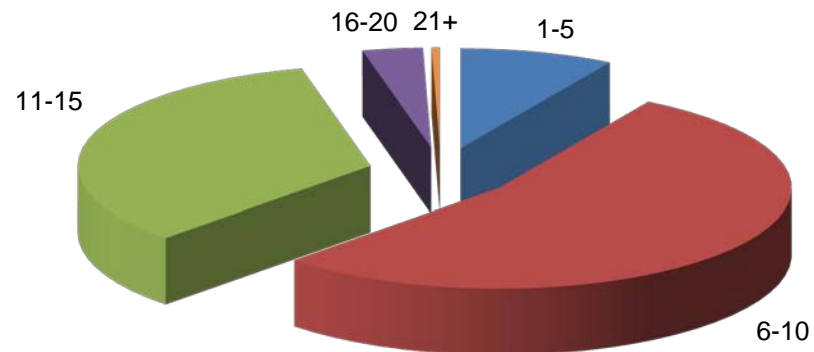
- (a) 297 All Weather Track fixtures
- (b) 2 Additional Flat fixtures
- (c) 2 AWT Flat fixtures cancelled
- (d) 1 additional Jump fixture
- (e) 1 Jump fixture abandoned and replaced by an additional AWT (Mixed) fixture
- (f) 1 Additional AWT Flat fixture
- (g) 316 All Weather Track fixtures programmed, 8 of which were transferred to Turf
- (h) 2 Additional Jump fixtures and 1 Jump fixture cancelled
- (i) 1 Additional Mixed (AWT) fixture
- (j) 1 Additional Evening fixture and 2 Evening fixtures cancelled
- (k) 361 All Weather Track Flat fixtures programmed
- (l) 2 All Weather Track Flat Evening fixtures withdrawn from the fixture list
- (m) 1 All Weather Track Flat fixture transferred to a Turf course
- (n) 1 Turf/AWT Flat fixture converted to AWT only
- (o) 1 AWT Flat fixture converted to Turf only
- (p) 1 abandoned Flat fixture replaced by an additional fixture
- (q) 1 Mixed fixture converted to a Flat fixture
- (r) 5 additional Jump fixtures, one of which was subsequently abandoned and one of which was replaced another abandoned fixture
- (s) 331 All Weather Track Flat fixtures programmed
- (t) 1 Jump fixture abandoned and replaced by Flat AWT fixture
- (u) 302 All Weather Track Flat fixtures programmed
- (v) 17 additional Flat fixtures programmed and 1 Flat fixture cancelled
- (w) 11 additional Jump fixtures programmed
- (x) 1 Jump fixture converted to a Mixed (AWT) fixture
- (y) 3 additional Mixed (AWT) fixtures programmed
- (z) 1 Evening fixture cancelled and 55 Evening fixtures converted to Twilight fixtures

## Numbers of Runners in Races

### Flat Racing

**2010**

Runners	Number of Races												Total	% of All Races
	Jan	Feb	Mar	Apr	May	Jun	Jul	Aug	Sep	Oct	Nov	Dec		
1-5	38	53	20	45	65	54	93	72	36	16	10	37	<b>539</b>	<b>8.5%</b>
6-10	204	172	163	246	402	394	489	471	328	213	132	178	<b>3,392</b>	<b>53.8%</b>
11-15	70	73	75	170	249	276	229	245	288	261	140	63	<b>2,139</b>	<b>33.9%</b>
16-20	0	0	6	14	26	29	24	24	38	45	4	0	<b>210</b>	<b>3.3%</b>
21+	0	0	1	1	2	6	4	0	6	7	2	0	<b>29</b>	<b>0.5%</b>
<b>TOTAL</b>	<b>312</b>	<b>298</b>	<b>265</b>	<b>476</b>	<b>744</b>	<b>759</b>	<b>839</b>	<b>812</b>	<b>696</b>	<b>542</b>	<b>288</b>	<b>278</b>	<b>6,309</b>	<b>100.0%</b>



## Numbers of Runners in Races

### Jump Racing

**2010**

#### Hurdle Races and National Hunt Flat Races

Runners	Number of Races												Total	% of All Races
	Jan	Feb	Mar	Apr	May	Jun	Jul	Aug	Sep	Oct	Nov	Dec		
1-5	3	9	11	14	9	4	6	8	6	9	13	3	<b>95</b>	<b>4.9%</b>
6-10	50	64	123	100	82	60	62	72	38	79	110	26	<b>866</b>	<b>44.6%</b>
11-15	66	93	111	87	86	68	30	22	31	93	101	33	<b>821</b>	<b>42.3%</b>
16-20	8	19	25	17	9	1	4	1	3	12	23	21	<b>143</b>	<b>7.4%</b>
21+	0	1	7	3	2	0	0	0	0	0	1	1	<b>15</b>	<b>0.8%</b>
<b>TOTAL</b>	<b>127</b>	<b>186</b>	<b>277</b>	<b>221</b>	<b>188</b>	<b>133</b>	<b>102</b>	<b>103</b>	<b>78</b>	<b>193</b>	<b>248</b>	<b>84</b>	<b>1,940</b>	<b>100.0%</b>

#### Steeple Chases

Runners	Number of Races												Total	% of All Races
	Jan	Feb	Mar	Apr	May	Jun	Jul	Aug	Sep	Oct	Nov	Dec		
1-5	25	31	70	49	27	12	9	15	6	22	51	5	<b>322</b>	<b>24.4%</b>
6-10	38	70	104	84	80	49	37	40	32	80	108	23	<b>745</b>	<b>56.6%</b>
11-15	23	23	29	22	31	15	9	6	4	16	15	14	<b>207</b>	<b>15.7%</b>
16-20	0	1	7	9	2	1	2	1	0	2	5	5	<b>35</b>	<b>2.7%</b>
21+	0	0	4	4	0	0	0	0	0	0	0	0	<b>8</b>	<b>0.6%</b>
<b>TOTAL</b>	<b>86</b>	<b>125</b>	<b>214</b>	<b>168</b>	<b>140</b>	<b>77</b>	<b>57</b>	<b>62</b>	<b>42</b>	<b>120</b>	<b>179</b>	<b>47</b>	<b>1,317</b>	<b>100.0%</b>

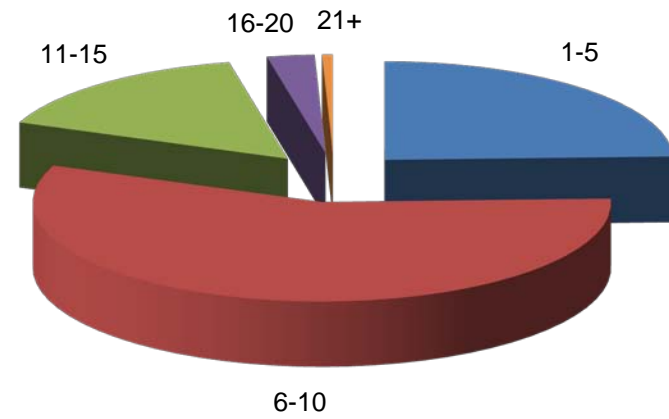
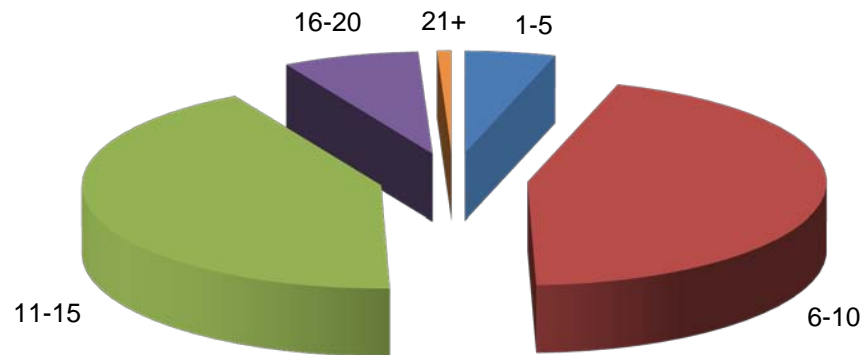
# Numbers of Runners in Races

## Jump Racing

2010

### Hurdle Races and National Hunt Flat Races

### Steeple Chases



## Analysis of Racing by Size of Field

### Flat Races

Runners	2006		2007		2008		2009		2010	
	Number of Races	% of All Races	Number of Races	% of All Races	Number of Races	% of All Races	Number of Races	% of All Races	Number of Races	% of All Races
1-5	295	5.3%	256	4.5%	426 <sup>(1)</sup>	7.0%	454	7.3%	539	8.5%
6-10	2,367	42.6%	2,536	44.8%	2,964	48.4%	3,205	51.2%	3,392	53.8%
11-15	2,518	45.3%	2,524	44.6%	2,398	39.1%	2,324	37.2%	2,139	33.9%
16-20	348	6.3%	310	5.5%	311	5.1%	245	3.9%	210	3.3%
21+	26	0.5%	33	0.6%	29	0.5%	26	0.4%	29	0.5%
<b>TOTAL</b>	<b>5,554</b>	<b>100.0%</b>	<b>5,659</b>	<b>100.0%</b>	<b>6,128</b>	<b>100.0%</b>	<b>6,254</b>	<b>100.0%</b>	<b>6,309</b>	<b>100.0%</b>

### Jump Races

Runners	2006		2007		2008		2009		2010	
	Number of Races	% of All Races	Number of Races	% of All Races	Number of Races	% of All Races	Number of Races	% of All Races	Number of Races	% of All Races
1-5	264	7.8%	317 <sup>(1)</sup>	9.9%	256	7.6%	341	10.1%	417	12.8%
6-10	1,565	46.3%	1,375	42.7%	1,431	42.5%	1,564	46.4%	1,611	49.5%
11-15	1,217	36.0%	1,189	36.9%	1,317	39.1%	1,199	35.5%	1,028	31.6%
16-20	305	9.0%	312	9.7%	333	9.9%	248	7.4%	178	5.5%
21+	29	0.9%	25	0.8%	29	0.9%	22	0.7%	23	0.7%
<b>TOTAL</b>	<b>3,380</b>	<b>100.0%</b>	<b>3,218</b>	<b>100.0%</b>	<b>3,366</b>	<b>100.0%</b>	<b>3,374</b>	<b>100.0%</b>	<b>3,257</b>	<b>100.0%</b>

#### Notes

The number of walkovers is shown in brackets.

## Analysis of Racing by Size of Field

### Hurdle Races and National Hunt Flat Races

Runners	2006		2007		2008		2009		2010	
	Number of Races	% of All Races	Number of Races	% of All Races	Number of Races	% of All Races	Number of Races	% of All Races	Number of Races	% of All Races
1-5	70	3.5%	72	3.8%	61	3.1%	82	4.1%	95	4.9%
6-10	759	37.8%	688	35.9%	657	32.9%	833	41.2%	866	44.6%
11-15	894	44.6%	877	45.8%	981	49.2%	898	44.4%	821	42.3%
16-20	266	13.3%	262	13.7%	272	13.6%	195	9.6%	143	7.4%
21+	17	0.8%	15	0.8%	23	1.2%	15	0.7%	15	0.8%
<b>TOTAL</b>	<b>2,006</b>	100.0%	<b>1,914</b>	100.0%	<b>1,994</b>	100.0%	<b>2,023</b>	100.0%	<b>1,940</b>	100.0%

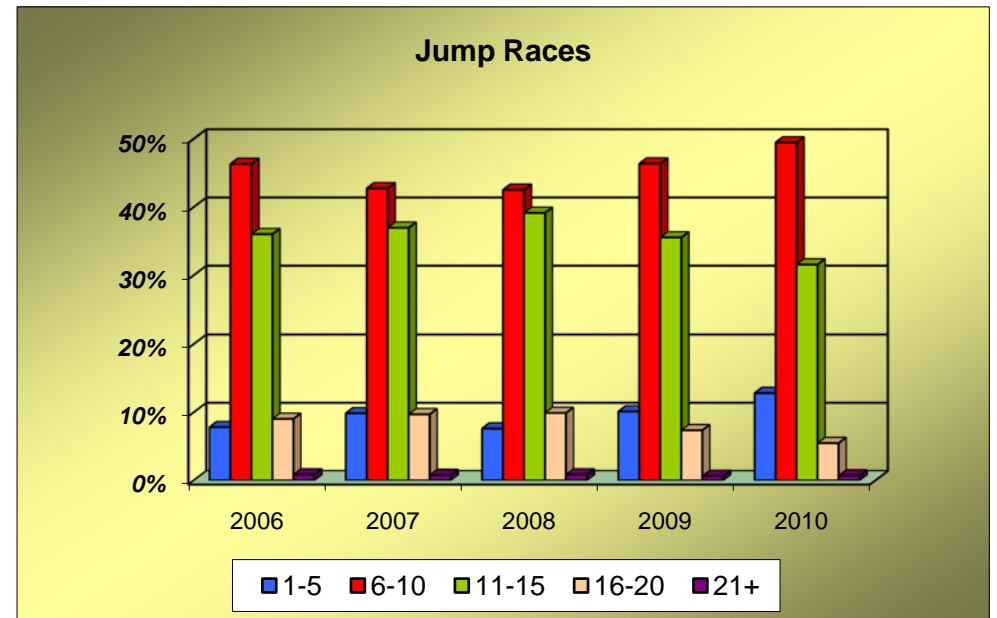
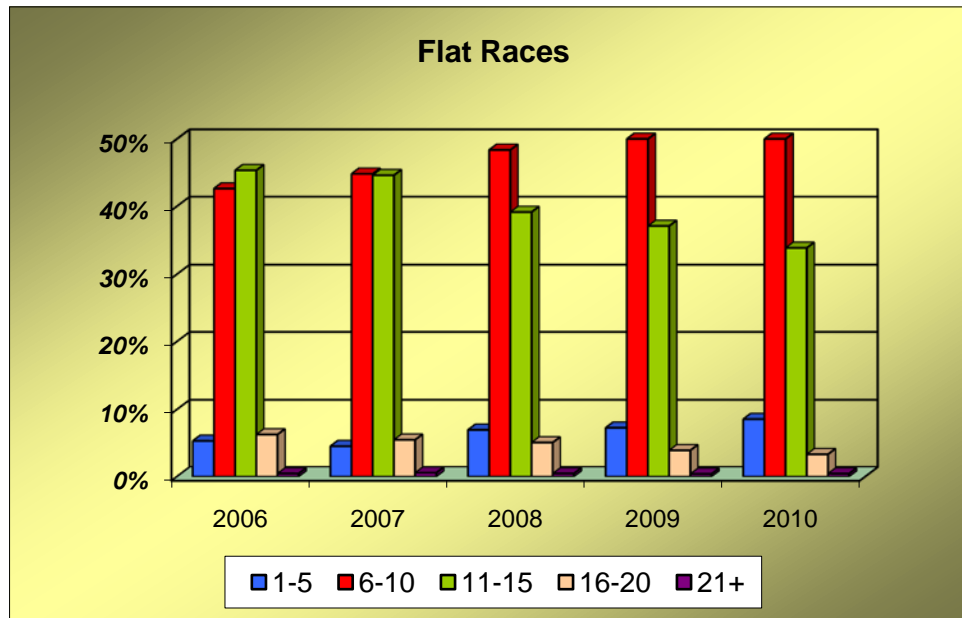
### Steeple Chases

Runners	2006		2007		2008		2009		2010	
	Number of Races	% of All Races	Number of Races	% of All Races	Number of Races	% of All Races	Number of Races	% of All Races	Number of Races	% of All Races
1-5	194	14.1%	245 <sup>(1)</sup>	18.8%	195	14.2%	259	19.2%	322	24.4%
6-10	806	58.7%	687	52.7%	774	56.4%	731	54.1%	745	56.6%
11-15	323	23.5%	312	23.9%	336	24.5%	301	22.3%	207	15.7%
16-20	39	2.8%	50	3.8%	61	4.4%	53	3.9%	35	2.7%
21+	12	0.9%	10	0.8%	6	0.4%	7	0.5%	8	0.6%
<b>TOTAL</b>	<b>1,374</b>	100.0%	<b>1,304</b>	100.0%	<b>1,372</b>	100.0%	<b>1,351</b>	100.0%	<b>1,317</b>	100.0%

#### Notes

The number of walkovers is shown in brackets.

## Analysis of Racing by Size of Field



## Analysis of Racing

### Number of Different Horses Which Ran, Number of Different Horses Which Won, Number of Races Divided Overnight, and Number of Horses Balloted Out Or Eliminated

#### Flat Racing

	2006	2007	2008	2009	2010
No. of Different Horses Which Ran as 2-y-o	2,952	3,226	3,313	3,176	3,075
No. of Different Horses Which Ran as 3-y-o	3,388	3,318	3,696	3,604	3,428
No. of Different Horses Which Ran as 4-y-o +	4,614	4,739	4,791	4,998	4,899
No. of Different Horses Which Ran - TOTAL	10,954	11,283	11,800	11,778	11,402
Average Number of Runs per Horse that Ran	5.4	5.3	5.3	5.3	5.3
No. of Different Horses Which Won a Race	3,641	3,782	4,016	4,057	4,075
No. of Races Divided Overnight	177	177	165	215	339
No. of Horses Balloted Out or Eliminated	13,982	12,653	10,876	10,924	7,780

#### Jump Racing

	2006	2007	2008	2009	2010
No. of Different Horses Which Ran	9,783	9,896	10,050	9,920	9,212
Average Number of Runs per Horse that Ran	3.6	3.4	3.6	3.4	3.4
No. of Different Horses Which Won a Race	2,325	2,267	2,327	2,350	2,303
No. of Races Divided Overnight	76	73	59	72	69
No. of Horses Balloted Out or Eliminated	4,451	4,907	5,292	3,839	2,416

## Racing and Prize Money Statistics

### Entries, Runners, Eliminations and Prize Money by Type of Race

#### Flat Races

2010

Type of Race	No. of Races	Entries		Runners		Eliminations		Value £	% of Total Value
		Total	Average	Total	Average	Total	Average		
<b>HANDICAPS</b>									
Sellers	11	243	22.1	140	12.7	21	1.9	35,770	0.1%
Apprentices	212	4,433	20.9	2,075	9.8	228	1.1	817,250	1.2%
Amateurs	86	1,875	21.8	1,014	11.8	195	2.3	363,400	0.5%
Others	3,673	82,158	22.4	36,541	9.9	6,182	1.7	27,742,263	41.1%
<b>Sub-Total</b>	<b>3,982</b>	<b>88,709</b>	<b>22.3</b>	<b>39,770</b>	<b>10.0</b>	<b>6,626</b>	<b>1.7</b>	<b>28,958,683</b>	<b>42.9%</b>
<b>WEIGHT FOR AGE</b>									
Sellers	218	4,173	19.1	1,924	8.8	80	0.4	671,450	1.0%
Claimers	268	5,040	18.8	2,147	8.0	158	0.6	854,590	1.3%
Maidens	1,324	32,064	24.2	12,701	9.6	581	0.4	6,472,102	9.6%
Novices	45	736	16.4	243	5.4	0	0.0	288,868	0.4%
Apprentices	16	292	18.3	143	8.9	3	0.2	48,050	0.1%
Amateurs	2	42	21.0	24	12.0	30	15.0	5,200	0.0%
Pattern	142	4,874	34.3	1,341	9.4	2	0.0	20,483,170	30.3%
Others	312	8,184	26.2	2,523	8.1	228	0.7	9,790,746	14.5%
<b>Sub-Total</b>	<b>2,327</b>	<b>55,405</b>	<b>23.8</b>	<b>21,046</b>	<b>9.0</b>	<b>1,082</b>	<b>0.5</b>	<b>38,614,176</b>	<b>57.1%</b>
<b>TOTAL</b>	<b>6,309</b>	<b>144,114</b>	<b>22.8</b>	<b>60,816</b>	<b>9.6</b>	<b>7,708</b>	<b>1.2</b>	<b>67,572,859</b>	<b>100.0%</b>

**Notes**

The above prize money figures have been rounded up or down as necessary. Consequently, the total prize money may not equate to the sum of the individual parts.

**Racing and Prize Money Statistics**  
**Entries, Runners, Eliminations and Prize Money by Type of Race**

**Jump Races**  
**2010**

Type of Race	No. of Races	Entries		Runners		Eliminations		Value £	% of Total Value
		Total	Average	Total	Average	Total	Average		
<b>HURDLE RACES</b>									
<b>HANDICAPS</b>									
Novices'	115	3,133	27.2	1,277	11.1	164	1.4	793,350	2.5%
Sellers	20	466	23.3	225	11.3	23	1.2	68,100	0.2%
Conditional Jockeys	96	2,624	27.3	1,114	11.6	154	1.6	485,000	1.5%
Amateurs	27	625	23.1	292	10.8	27	1.0	100,600	0.3%
Others	562	15,092	26.9	6,250	11.1	428	0.8	4,996,874	15.9%
<b>WEIGHT FOR AGE</b>									
Novices'	482	13,644	28.3	4,742	9.8	350	0.7	3,543,058	11.3%
Maidens	171	5,567	32.6	1,956	11.4	253	1.5	703,150	2.2%
Sellers	63	1,547	24.6	591	9.4	3	0.0	191,350	0.6%
Conditional Jockeys	21	528	25.1	198	9.4	0	0.0	75,400	0.2%
Amateurs	3	91	30.3	30	10.0	15	5.0	12,000	0.0%
Others	82	1,433	17.5	721	8.8	8	0.1	2,344,982	7.5%
National Hunt Flat Races	279	8,260	29.6	3,120	11.2	350	1.3	989,550	3.2%
<b>Sub-Total</b>	<b>1,940</b>	<b>53,442</b>	<b>27.5</b>	<b>20,667</b>	<b>10.7</b>	<b>1,780</b>	<b>0.9</b>	<b>14,370,497</b>	<b>45.8%</b>
<b>STEEPLE CHASES</b>									
<b>HANDICAPS</b>									
Novices'	144	2,631	18.3	1,146	8.0	40	0.3	1,097,244	3.5%
Sellers	2	42	21.0	20	10.0	4	2.0	7,500	0.0%
Conditional Jockeys	31	590	19.0	269	8.7	11	0.4	152,983	0.5%
Amateurs	10	249	24.9	110	11.0	23	2.3	128,429	0.4%
Hunters	2	24	12.0	12	6.0	0	0.0	16,000	0.1%
Others	665	13,663	20.5	5,912	8.9	250	0.4	9,141,018	29.1%
<b>WEIGHT FOR AGE</b>									
Novices'	318	5,048	15.9	1,783	5.6	5	0.0	3,244,670	10.3%
Maidens	6	108	18.0	49	8.2	0	0.0	29,500	0.1%
Amateurs	3	109	36.3	38	12.7	0	0.0	99,000	0.3%
Hunters	106	2,330	22.0	996	9.4	72	0.7	450,962	1.4%
Others	30	454	15.1	207	6.9	0	0.0	2,652,006	8.4%
<b>Sub-Total</b>	<b>1,317</b>	<b>25,248</b>	<b>19.2</b>	<b>10,542</b>	<b>8.0</b>	<b>405</b>	<b>0.3</b>	<b>17,019,312</b>	<b>54.2%</b>
<b>GRAND TOTAL</b>	<b>3,257</b>	<b>78,690</b>	<b>24.2</b>	<b>31,209</b>	<b>9.6</b>	<b>2,185</b>	<b>0.7</b>	<b>31,389,808</b>	<b>100.0%</b>

**Notes**

The above prize money figures have been rounded up or down as necessary. Consequently, the total prize money may not equate to the sum of the individual parts.

## Racing and Prize Money Statistics

### Entries, Runners, Eliminations and Prize Money by Distance of Race

#### Hurdle Races and National Hunt Flat Races

2010

Distance of Race	No. of Races	Entries		Runners		Eliminations		Value £	% of Total Value
		Total	Average	Total	Average	Total	Average		
<b>HANDICAPS</b>									
2 Miles	288	7,040	24.4	3,078	10.7	180	0.6	2,519,074	17.5%
2 ¼ Miles	75	1,930	25.7	787	10.5	36	0.5	416,250	2.9%
2 ½ Miles	213	6,383	30.0	2,533	11.9	259	1.2	1,697,300	11.8%
2 ¾ Miles	84	2,369	28.2	939	11.2	122	1.5	541,100	3.8%
3 Miles and over	160	4,218	26.4	1,821	11.4	199	1.2	1,270,200	8.8%
<b>Sub-Total</b>	<b>820</b>	<b>21,940</b>	<b>26.8</b>	<b>9,158</b>	<b>11.2</b>	<b>796</b>	<b>1.0</b>	<b>6,443,924</b>	<b>44.8%</b>
<b>WEIGHT FOR AGE</b>									
2 Miles	690	19,213	27.8	7,304	10.6	684	1.0	4,359,996	30.3%
2 ¼ Miles	90	2,527	28.1	913	10.1	84	0.9	405,250	2.8%
2 ½ Miles	210	6,456	30.7	2,081	9.9	136	0.6	1,686,185	11.7%
2 ¾ Miles	56	1,618	28.9	563	10.1	60	1.1	259,512	1.8%
3 Miles and over	74	1,688	22.8	648	8.8	20	0.3	1,215,630	8.5%
<b>Sub-Total</b>	<b>1,120</b>	<b>31,502</b>	<b>28.1</b>	<b>11,509</b>	<b>10.3</b>	<b>984</b>	<b>0.9</b>	<b>7,926,573</b>	<b>55.2%</b>
<b>TOTAL</b>	<b>1,940</b>	<b>53,442</b>	<b>27.5</b>	<b>20,667</b>	<b>10.7</b>	<b>1,780</b>	<b>0.9</b>	<b>14,370,497</b>	<b>100.0%</b>

**Notes**

The above prize money figures have been rounded up or down as necessary. Consequently, the total prize money may not equate to the sum of the individual parts.

## Racing and Prize Money Statistics

### Entries, Runners, Eliminations and Prize Money by Distance of Race

#### Steeple Chases

2010

Distance of Race	No. of Races	Entries		Runners		Eliminations		Value £	% of Total Value
		Total	Average	Total	Average	Total	Average		
<b>HANDICAPS</b>									
2 Miles	167	2,619	15.7	1,273	7.6	19	0.1	1,558,205	9.2%
2 ¼ Miles	60	1,022	17.0	502	8.4	2	0.0	455,417	2.7%
2 ½ Miles	220	4,643	21.1	1,885	8.6	76	0.3	2,442,153	14.3%
2 ¾ Miles	105	2,154	20.5	947	9.0	50	0.5	1,087,283	6.4%
3 Miles and over	302	6,761	22.4	2,862	9.5	181	0.6	5,000,116	29.4%
<b>Sub-Total</b>	<b>854</b>	<b>17,199</b>	<b>20.1</b>	<b>7,469</b>	<b>8.7</b>	<b>328</b>	<b>0.4</b>	<b>10,543,174</b>	<b>61.9%</b>
<b>WEIGHT FOR AGE</b>									
2 Miles	87	1,217	14.0	494	5.7	0	0.0	1,566,459	9.2%
2 ¼ Miles	27	420	15.6	172	6.4	0	0.0	269,012	1.6%
2 ½ Miles	128	2,293	17.9	831	6.5	10	0.1	1,558,111	9.2%
2 ¾ Miles	59	1,182	20.0	406	6.9	30	0.5	539,377	3.2%
3 Miles and over	162	2,937	18.1	1,170	7.2	37	0.2	2,543,178	14.9%
<b>Sub-Total</b>	<b>463</b>	<b>8,049</b>	<b>17.4</b>	<b>3,073</b>	<b>6.6</b>	<b>77</b>	<b>0.2</b>	<b>6,476,137</b>	<b>38.1%</b>
<b>TOTAL</b>	<b>1,317</b>	<b>25,248</b>	<b>19.2</b>	<b>10,542</b>	<b>8.0</b>	<b>405</b>	<b>0.3</b>	<b>17,019,312</b>	<b>100.0%</b>

**Notes**

The above prize money figures have been rounded up or down as necessary. Consequently, the total prize money may not equate to the sum of the individual parts.

## Prize Money by Source for Pattern Races

### Flat Racing

2010

Racecourse	No. of Races	Prize Money Contributions		
		Racecourse Executive plus Sponsors £	Owners' Contribution £	Total Prize Fund £
ASCOT	29	3,759,470	1,625,775	5,385,245
AYR	1	54,300	5,700	60,000
CHESTER	4	256,825	23,175	280,000
DONCASTER	8	1,034,275	352,425	1,386,700
EPSOM DOWNS	5	1,319,975	760,625	2,080,600
GOODWOOD	16	1,347,185	279,475	1,626,660
HAYDOCK PARK	5	478,350	124,700	603,050
KEMPTON PARK	2	90,460	9,000	99,460
LINGFIELD PARK	3	212,500	17,500	230,000
NEWBURY	12	748,913	129,710	878,623
NEWCASTLE	1	60,710	4,290	65,000
NEWMARKET	30	2,798,390	1,257,215	4,055,605
SALISBURY	1	56,100	3,900	60,000
SANDOWN PARK	8	804,725	181,025	985,750
WINDSOR	1	60,043	4,080	64,123
YORK	16	1,896,040	726,315	2,622,355
<b>TOTAL</b>	<b>142</b>	<b>14,978,260</b>	<b>5,504,910</b>	<b>20,483,170</b>

#### **NOTES**

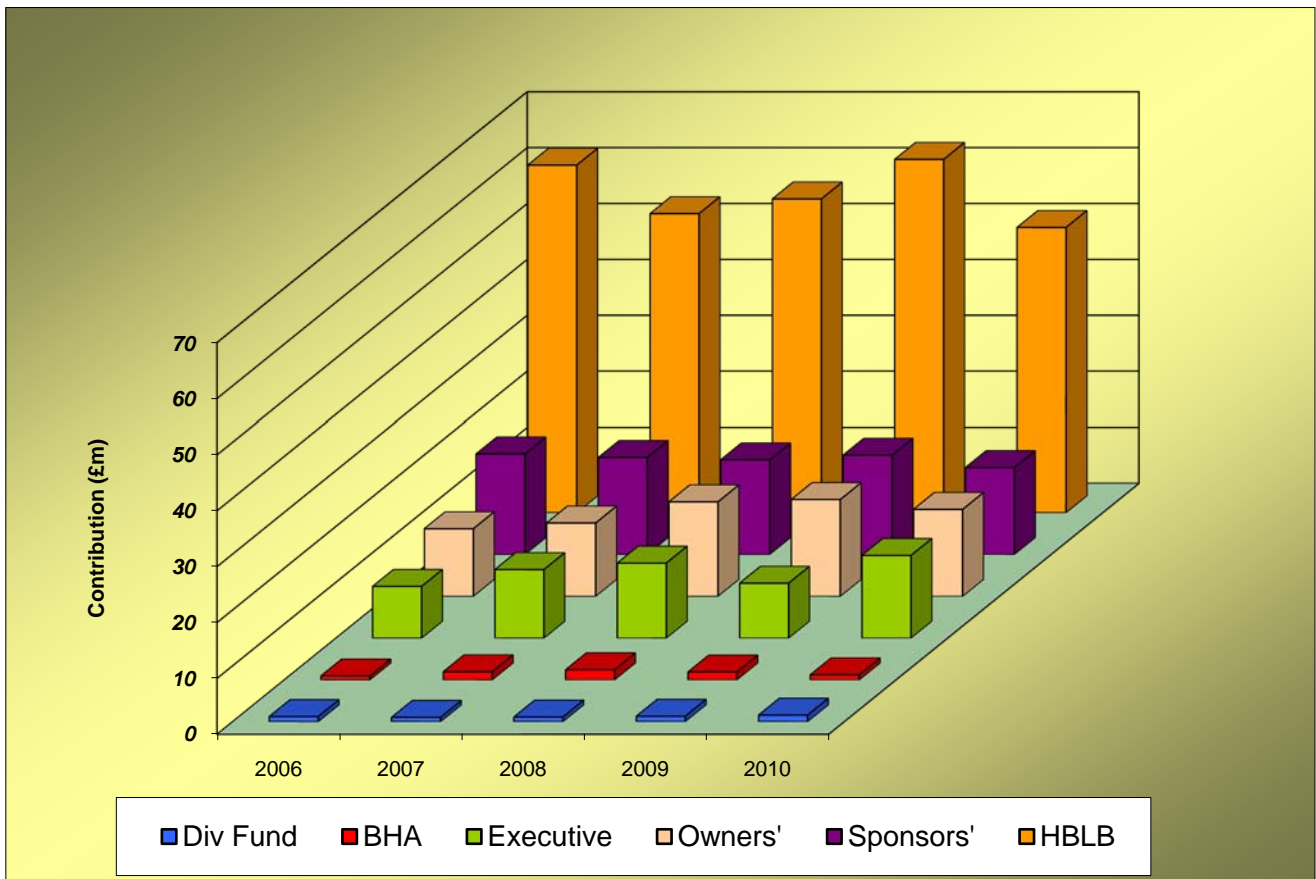
The above prize money figures have been rounded up or down as necessary. Consequently, the total prize money may not equate to the sum of the individual parts.

## Breakdown of Prize Money by Source

	£ Million						TOTAL
	Executive	Sponsors'	HBLB	Owners'	BHA	Div Fund	
<b>2006</b>	9.26	18.00	62.10	12.10	0.71	0.92	<b>103.10</b>
<b>2007</b>	12.27	17.37	53.42	13.13	1.46	0.78	<b>98.43</b>
<b>2008</b>	13.42	16.95	56.06	16.91	1.81	0.85	<b>106.00</b>
<b>2009</b>	9.83	17.78	63.14	17.32	1.41	0.97	<b>110.46</b>
<b>2010</b>	14.80	15.55	50.96	15.57	0.90	1.18	<b>98.96</b>

**Notes**

The above figures have been rounded to two decimal places.  
 Consequently, the TOTAL column will not always equate to the sum of the individual parts.



## Comparison of Flat/Jump Prize Money Pools

### Prize Money Statistics

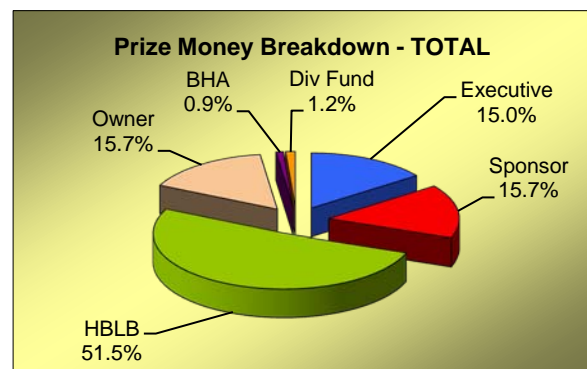
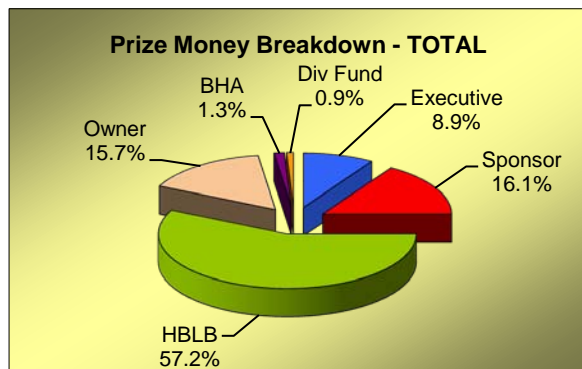
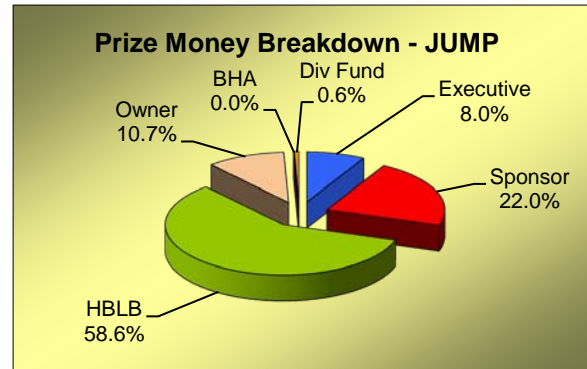
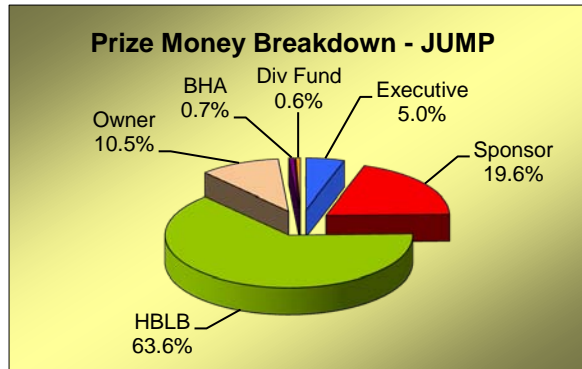
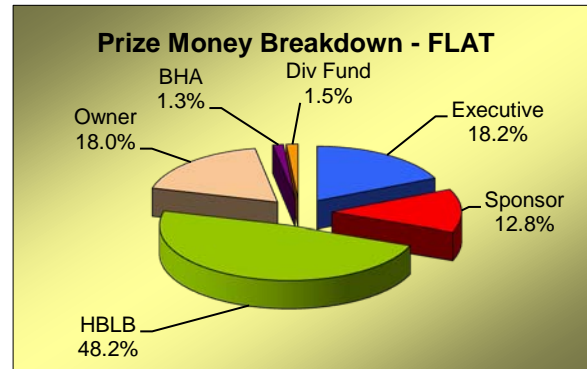
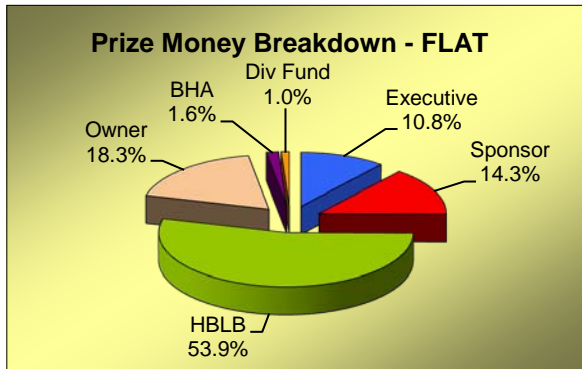
2009

	Flat	Jump	TOTAL
<b>Executive</b>	7,974,056	1,859,364	<b>9,833,419</b>
<b>Sponsor</b>	10,542,718	7,235,181	<b>17,777,899</b>
<b>HBLB</b>	39,644,428	23,491,777	<b>63,136,205</b>
<b>Owner</b>	13,453,611	3,871,002	<b>17,324,613</b>
<b>BHA</b>	1,143,000	271,500	<b>1,414,500</b>
<b>Div Fund</b>	751,950	222,450	<b>974,400</b>
<b>TOTAL</b>	<b>68,722,658</b>	<b>37,277,856</b>	<b>110,461,037</b>

### Prize Money Statistics

2010

	Flat	Jump	TOTAL
<b>Executive</b>	12,287,734	2,512,069	<b>14,799,803</b>
<b>Sponsor</b>	8,634,787	6,918,934	<b>15,553,721</b>
<b>HBLB</b>	32,577,896	18,380,679	<b>50,958,575</b>
<b>Owner</b>	12,195,691	3,373,477	<b>15,569,168</b>
<b>BHA</b>	892,000	10,000	<b>902,000</b>
<b>Div Fund</b>	984,750	194,650	<b>1,179,400</b>
<b>TOTAL</b>	<b>67,572,859</b>	<b>31,389,808</b>	<b>98,962,667</b>



**Notes**

The above figures have been rounded up or down as necessary. Consequently, the totals will not always equate to the sum of the individual parts.

## Total Prize Money by Racecourse Flat Racing - 2010

	Fixtures Ran (Aban)	Exec+Spons	HBLB	Owners	BHA	Div Fund	TOTAL
ASCOT	17	3,643,929	2,070,022	1,956,512	62,500	7,000	7,739,963
AYR	16	363,788	562,684	145,178	10,000	16,000	1,097,650
BATH	22	174,885	422,292	65,603	8,000	9,550	680,330
BEVERLEY	20	269,924	449,960	60,507	26,500	23,100	829,991
BRIGHTON	23	100,063	458,600	55,011	0	5,600	619,274
CARLISLE	10	86,586	239,500	39,025	0	7,500	372,611
CATTERICK BRIDGE	18	60,459	378,980	40,620	4,000	21,200	505,259
CHEPSTOW	11 (4)	86,379	200,210	32,961	1,000	7,000	327,550
CHESTER	13	615,752	772,860	90,186	41,000	12,750	1,532,548
DONCASTER	24	1,266,918	1,452,968	962,234	62,000	20,000	3,764,120
EPSOM DOWNS	15	1,297,708	906,450	853,490	23,000	0	3,080,648
FFOS LAS	11	111,863	260,920	33,043	0	0	405,826
FOLKESTONE	13	52,493	285,030	34,006	0	2,000	373,529
GOODWOOD	22 (1)	1,320,990	1,676,354	513,926	36,000	4,000	3,551,270
HAMILTON PARK	18	253,818	410,420	56,202	20,000	0	740,440
HAYDOCK PARK	23	793,088	1,036,235	333,022	37,000	22,600	2,221,945
KEMPTON PARK	85 (3)	435,093	2,380,340	295,759	47,000	137,350	3,295,542
LEICESTER	20	228,153	427,232	83,792	33,000	20,000	792,177
LINGFIELD PARK	86 (6)	624,629	2,276,695	254,077	43,000	117,950	3,316,351
MUSSELBURGH	18	353,307	428,622	83,548	16,500	6,000	887,977
NEWBURY	19	664,317	1,229,302	406,755	62,000	67,500	2,429,874
NEWCASTLE	18 (2)	255,605	554,090	132,050	3,000	26,750	971,495
NEWMARKET	38	3,063,140	3,220,213	2,851,254	123,500	33,000	9,291,107
NOTTINGHAM	19	144,512	421,870	93,468	29,000	42,000	730,850
PONTEFRACT	16	229,851	562,870	50,584	29,500	16,500	889,305
REDCAR	19	130,279	416,670	277,197	6,000	22,900	853,046
RIPON	15	273,884	436,200	91,647	15,000	12,000	828,731
SALISBURY	15	237,608	518,532	74,984	30,500	29,000	890,624
SANDOWN PARK	19	698,148	1,163,322	315,726	34,000	9,000	2,220,196
SOUTHWELL	60 (1)	-38,348	1,465,685	100,878	2,000	31,200	1,561,415
THIRSK	14	187,104	397,260	76,376	5,000	56,500	722,240
WARWICK	11 (1)	83,325	292,540	56,516	9,000	11,500	452,881
WINDSOR	26	278,640	639,710	104,983	27,000	23,000	1,073,333
WOLVERHAMPTON	96 (3)	100,865	2,235,895	231,037	3,000	143,800	2,714,597
YARMOUTH	24	155,888	451,082	77,380	6,000	20,500	710,850
YORK	17	2,317,879	1,476,282	1,266,154	37,000	0	5,097,315
<b>TOTAL</b>	<b>911 (21)</b>	<b>20,922,521</b>	<b>32,577,896</b>	<b>12,195,691</b>	<b>892,000</b>	<b>984,750</b>	<b>67,572,859</b>

### Notes

The above figures have been rounded up or down as necessary. Consequently, the totals will not always equate to the sum of the individual parts. Mixed meetings are included with the Flat figures.

## Total Prize Money by Racecourse Jump Racing - 2010

	Fixtures Ran	(Aban)	Exec+Spons	HBLB	Owners	BHA	Div Fund	TOTAL
AINTREE	9		1,641,959	993,232	476,088	0	0	3,111,279
ASCOT	6	(2)	455,466	547,113	92,058	0	0	1,094,637
AYR	6	(6)	261,392	316,320	100,723	0	0	678,435
BANGOR-ON-DEE	16	(2)	165,720	502,553	34,363	0	9,650	712,286
CARLISLE	8	(4)	103,007	229,928	33,375	0	3,000	369,310
CARTMEL	7		65,224	151,740	24,036	0	0	241,000
CATTERICK BRIDGE	6	(4)	48,683	119,350	15,867	0	0	183,900
CHEL TENHAM	17		3,074,524	1,771,222	801,844	0	4,000	5,651,590
CHEPSTOW	11	(4)	43,648	362,980	40,074	0	2,500	449,202
DONCASTER	5	(4)	108,854	327,540	77,904	0	0	514,298
EXETER	14	(2)	141,608	466,932	67,872	0	7,500	683,912
FAKENHAM	8	(2)	95,140	232,760	0	0	0	327,900
FFOS LAS	14	(3)	113,229	440,500	55,143	0	9,000	617,872
FOLKESTONE	5	(4)	17,545	142,335	17,520	0	0	177,400
FONTWELL PARK	20	(4)	81,021	568,828	71,004	0	0	720,853
HAYDOCK PARK	7	(2)	547,975	525,141	110,343	10,000	0	1,193,459
HEREFORD	10	(4)	7,059	258,760	40,456	0	4,000	310,275
HEXHAM	13	(2)	37,108	390,210	44,805	0	6,500	478,623
HUNTINGDON	16	(3)	42,049	451,542	63,384	0	9,500	566,475
KELSO	11	(3)	87,007	369,518	36,866	0	3,300	496,691
KEMPTON PARK	11	(3)	27,362	663,580	76,565	0	7,000	774,507
LEICESTER	5	(7)	4,073	162,005	14,989	0	0	181,067
LINGFIELD PARK	4	(1)	-4,853	146,393	13,760	0	2,200	157,500
LUDLOW	11	(5)	75,327	363,740	37,825	0	0	476,892
MARKET RASEN	19	(3)	156,169	607,600	76,853	0	6,000	846,622
MUSSELBURGH	5	(5)	59,445	181,040	20,515	0	4,000	265,000
NEWBURY	11	(1)	542,851	788,493	157,932	0	0	1,489,276
NEWCASTLE	6	(6)	-30,401	219,850	19,243	0	0	208,692
NEWTON ABBOT	17	(1)	170,421	477,590	5,180	0	4,700	657,891
PERTH	14		135,479	430,520	38,938	0	4,000	608,937
PLUMPTON	16	(1)	43,031	472,548	34,280	0	4,000	553,859
SANDOWN PARK	5	(4)	305,406	417,628	105,640	0	0	828,674
SEDFIELD	15	(4)	8,500	390,150	46,687	0	0	445,337
SOUTHWELL	16	(2)	38,995	465,060	49,345	0	8,800	562,200
STRATFORD-ON-AVON	18		203,105	528,585	66,867	0	13,000	811,557
TAUNTON	10	(5)	92,660	314,675	33,175	0	15,000	455,510
TOWCESTER	16	(4)	39,993	411,100	48,407	0	6,000	505,500
UTTOXETER	24	(1)	76,766	675,720	112,857	0	23,000	888,343
WARWICK	8	(2)	13,281	274,368	35,811	0	0	323,460
WETHERBY	12	(5)	152,764	385,516	50,464	0	1,500	590,244
WINCANTON	12	(5)	135,977	425,640	57,228	0	1,500	620,345
WORCESTER	17		46,436	410,373	67,191	0	35,000	559,000
<b>TOTAL</b>	<b>481</b>	<b>(120)</b>	<b>9,431,003</b>	<b>18,380,679</b>	<b>3,373,477</b>	<b>10,000</b>	<b>194,650</b>	<b>31,389,808</b>

### Notes

The above figures have been rounded up or down as necessary. Consequently, the totals will not always equate to the sum of the individual parts.

## Total Prize Money by Racecourse All Racing - 2010

	Fixtures Ran (Aban)	Exec+Spons	HBLB	Owners	BHA	Div Fund	TOTAL
AINTREE	9	1,641,959	993,232	476,088	0	0	3,111,279
ASCOT	23 (2)	4,099,395	2,617,135	2,048,570	62,500	7,000	8,834,600
AYR	22 (6)	625,180	879,004	245,901	10,000	16,000	1,776,085
BANGOR-ON-DEE	16 (2)	165,720	502,553	34,363	0	9,650	712,286
BATH	22	174,885	422,292	65,603	8,000	9,550	680,330
BEVERLEY	20	269,924	449,960	60,507	26,500	23,100	829,991
BRIGHTON	23	100,063	458,600	55,011	0	5,600	619,274
CARLISLE	18 (4)	189,593	469,428	72,400	0	10,500	741,921
CARTMEL	7	65,224	151,740	24,036	0	0	241,000
CATTERICK BRIDGE	24 (4)	109,142	498,330	56,487	4,000	21,200	689,159
CHELTENHAM	17	3,074,524	1,771,222	801,844	0	4,000	5,651,590
CHEPSTOW	22 (8)	130,027	563,190	73,035	1,000	9,500	776,752
CHESTER	13	615,752	772,860	90,186	41,000	12,750	1,532,548
DONCASTER	29 (4)	1,375,772	1,780,508	1,040,138	62,000	20,000	4,278,418
EPSOM DOWNS	15	1,297,708	906,450	853,490	23,000	0	3,080,648
EXETER	14 (2)	141,608	466,932	67,872	0	7,500	683,912
FAKENHAM	8 (2)	95,140	232,760	0	0	0	327,900
FFOS LAS	25 (3)	225,092	701,420	88,186	0	9,000	1,023,698
FOLKESTONE	18 (4)	70,038	427,365	51,526	0	2,000	550,929
FONTWELL PARK	20 (4)	81,021	568,828	71,004	0	0	720,853
GOODWOOD	22 (1)	1,320,990	1,676,354	513,926	36,000	4,000	3,551,270
HAMILTON PARK	18	253,818	410,420	56,202	20,000	0	740,440
HAYDOCK PARK	30 (2)	1,341,063	1,561,376	443,365	47,000	22,600	3,415,404
HEREFORD	10 (4)	7,059	258,760	40,456	0	4,000	310,275
HEXHAM	13 (2)	37,108	390,210	44,805	0	6,500	478,623
HUNTINGDON	16 (3)	42,049	451,542	63,384	0	9,500	566,475
KELSO	11 (3)	87,007	369,518	36,866	0	3,300	496,691
KEMPTON PARK	96 (6)	462,455	3,043,920	372,324	47,000	144,350	4,070,049
LEICESTER	25 (7)	232,227	589,237	98,781	33,000	20,000	973,245
LINGFIELD PARK	90 (7)	619,776	2,423,088	267,837	43,000	120,150	3,473,851
LUDLOW	11 (5)	75,327	363,740	37,825	0	0	476,892
MARKET RASEN	19 (3)	156,169	607,600	76,853	0	6,000	846,622
MUSSELBURGH	23 (5)	412,752	609,662	104,063	16,500	10,000	1,152,977
NEWBURY	30 (1)	1,207,167	2,017,795	564,687	62,000	67,500	3,919,149
NEWCASTLE	24 (8)	225,204	773,940	151,293	3,000	26,750	1,180,187
NEWMARKET	38	3,063,140	3,220,213	2,851,254	123,500	33,000	9,291,107
NEWTON ABBOT	17 (1)	170,421	477,590	5,180	0	4,700	657,891
NOTTINGHAM	19	144,512	421,870	93,468	29,000	42,000	730,850
PERTH	14	135,479	430,520	38,938	0	4,000	608,937
PLUMPTON	16 (1)	43,031	472,548	34,280	0	4,000	553,859
PONTEFRAC T	16	229,851	562,870	50,584	29,500	16,500	889,305
REDCAR	19	130,279	416,670	277,197	6,000	22,900	853,046
RIPON	15	273,884	436,200	91,647	15,000	12,000	828,731
SALISBURY	15	237,608	518,532	74,984	30,500	29,000	890,624
SANDOWN PARK	24 (4)	1,003,554	1,580,950	421,366	34,000	9,000	3,048,870
SEDFIELD	15 (4)	8,500	390,150	46,687	0	0	445,337
SOUTHWELL	76 (3)	647	1,930,745	150,223	2,000	40,000	2,123,615
STRATFORD-ON-AVON	18	203,105	528,585	66,867	0	13,000	811,557
TAUNTON	10 (5)	92,660	314,675	33,175	0	15,000	455,510
THIRSK	14	187,104	397,260	76,376	5,000	56,500	722,240
TOWCESTER	16 (4)	39,993	411,100	48,407	0	6,000	505,500
UTTOXETER	24 (1)	76,766	675,720	112,857	0	23,000	888,343
WARWICK	19 (3)	96,605	566,908	92,327	9,000	11,500	776,340
WETHERBY	12 (5)	152,764	385,516	50,464	0	1,500	590,244
WINCANTON	12 (5)	135,977	425,640	57,228	0	1,500	620,345
WINDSOR	26	278,640	639,710	104,983	27,000	23,000	1,073,333
WOLVERHAMPTON	96 (3)	100,865	2,235,895	231,037	3,000	143,800	2,714,597
WORCESTER	17	46,436	410,373	67,191	0	35,000	559,000
YARMOUTH	24	155,888	451,082	77,380	6,000	20,500	710,850
YORK	17	2,317,879	1,476,282	1,266,154	37,000	0	5,097,315
<b>TOTAL</b>	<b>1,392 (141)</b>	<b>30,353,524</b>	<b>50,958,575</b>	<b>15,569,168</b>	<b>902,000</b>	<b>1,179,400</b>	<b>98,962,667</b>

### Notes

The above figures have been rounded up or down as necessary. Consequently, the totals will not always equate to the sum of the individual parts. Mixed meetings are included with the Flat figures.

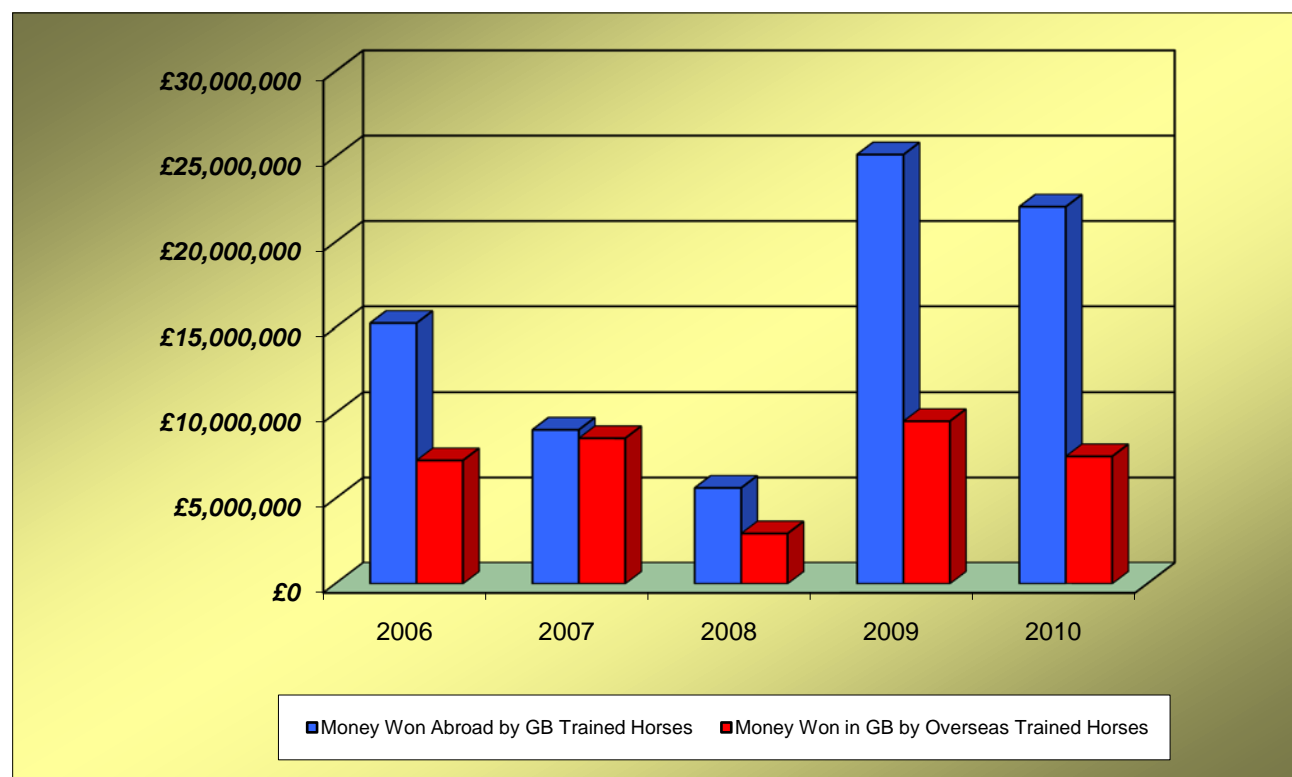
## Sponsored Number Cloth Income

**2010**

	FLAT	JUMP	TOTAL
AINTREE		11,000	11,000
ASCOT	33,000	7,000	40,000
AYR	3,250	1,500	4,750
BANGOR-ON-DEE		0	0
BATH	0		0
BEVERLEY	1,500		1,500
BRIGHTON	250		250
CARLISLE	0	500	500
CARTMEL		0	0
CATTERICK BRIDGE	0	0	0
CHELTENHAM		22,000	22,000
CHEPSTOW	0	1,000	1,000
CHESTER	9,500		9,500
DONCASTER	9,750	750	10,500
EPSOM DOWNS	8,000		8,000
EXETER		250	250
FAKENHAM		0	0
FFOS LAS	0	0	0
FOLKESTONE	0	0	0
FONTWELL PARK		500	500
GOODWOOD	15,000		20,000
HAMILTON PARK	750		750
HAYDOCK PARK	7,000	5,000	12,000
HEREFORD		0	0
HEXHAM		0	0
HUNTINGDON		1,000	1,000
KELSO		0	0
KEMPTON PARK	6,500	4,500	11,000
LEICESTER	0	0	0
LINGFIELD PARK	4,500	0	4,500
LUDLOW		0	0
MARKET RASEN		3,000	3,000
MUSSELBURGH	2,250	0	2,250
NEWBURY	14,500	7,000	21,500
NEWCASTLE	2,500	0	2,500
NEWMARKET	31,500		31,500
NEWTON ABBOT		0	0
NOTTINGHAM	0		0
PERTH		0	0
PLUMPTON		0	0
PONTEFRACT	0		0
REDCAR	500		500
RIPON	1,750		1,750
SALISBURY	1,000		1,000
SANDOWN PARK	5,750	6,250	12,000
SEDFIELD		0	0
SOUTHWELL	0	0	0
STRATFORD-ON-AVON		0	0
TAUNTON		0	0
THIRSK	0		0
TOWCESTER		0	0
UTTOXETER		1,500	1,500
WARWICK	0	1,000	1,000
WETHERBY		3,000	3,000
WINCANTON		1,000	1,000
WINDSOR	0		0
WOLVERHAMPTON	1,000		1,000
WORCESTER		500	500
YARMOUTH	0		0
YORK	22,500		22,500
<b>TOTAL</b>	<b>182,250</b>	<b>78,250</b>	<b>265,500</b>

## Prize Money Entering and Leaving Great Britain

	2006	2007	2008	2009	2010
<b>Prize Money WON ABROAD</b>					
by horses trained in Great Britain	15,247,516	9,028,843	5,621,876	25,124,821	22,067,795
<b>Prize Money WON IN GREAT BRITAIN</b>					
by horses trained outside of Great Britain	7,231,583	8,533,123	2,947,770	9,531,883	7,469,596



## Appearance Money and Owners' Premium Payments

	2006	2007	2008	2009	2010
	£	£	£	£	£
<b>APPEARANCE MONEY</b>					
Sundays	1,925,050	1,229,840	1,069,450	1,087,350	1,131,165
Other Days	1,150,950	318,800	398,500	391,100	0
<b>TOTAL</b>	<b>2,611,840</b>	<b>3,076,000</b>	<b>1,548,640</b>	<b>1,467,950</b>	<b>1,131,165</b>
<b>OWNERS' PREMIUMS</b>					
	446,860	707,854	N/A	N/A	N/A

